



Unit 16

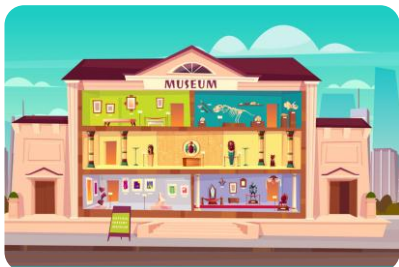
WHERE'S THE POST OFFICE?

Lesson 1





Vocabulary



museum



post office



bus stop



supermarket



market



pharmacy



theatre



cinema



stadium





Look and say



between

ở giữa





Look and say



over there

Ở đằng kia





Look and say



start



at the end

ở cuối





Look and say



opposite

đối diện





Look and say



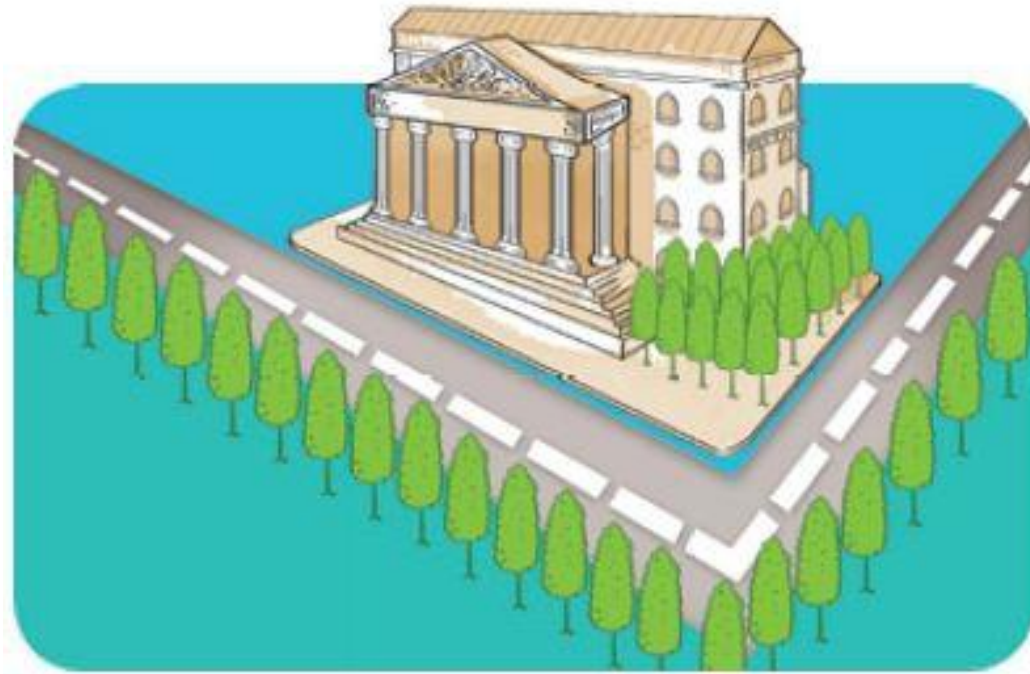
next to

bên cạnh





Look and say



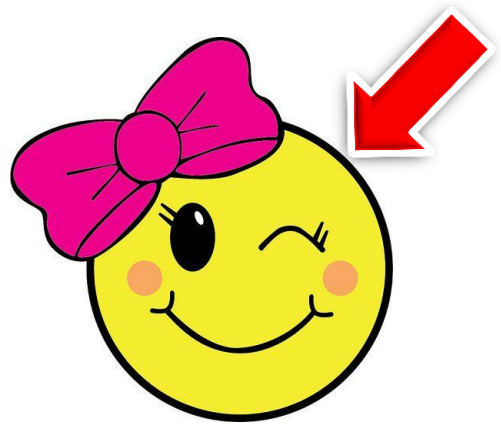
on the corner

ở góc





Look and say



near

ở gần





Vocabulary



Turn left

/tɜːrn left/

: Rẽ trái



Turn right

/tɜːrn rait/

: Rẽ phải



Go straight

/gəʊ streɪt/

: Đi thẳng



Go ahead

/gəʊ ə 'hed/

: Đi về phía trước



Go along

/gəʊ ə 'lɔːŋ/

: Đi dọc theo





1. Look, listen and repeat.



Excuse me,
where's the
park, please?

Go straight ahead.
It's at the end of
the street.

Thank you.

a



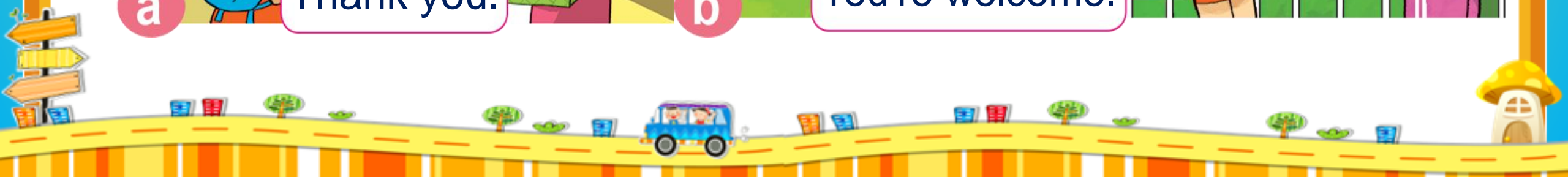
Excuse me, where's the toilet, please?

It's over there,
near the lake.

Thanks a lot.

You're welcome.

b





1. Look, listen and repeat.



Excuse me, is the museum near here?

No, it isn't. Turn left. It's on the corner of the street, next to the theatre.

Thank you.



c

Thank you.



Excuse me, where's the post office?

Turn right. It's between the supermarket and the cinema.

Thanks a lot.



d

You're welcome.





Structure:



Excuse me, where's
the _____?

It's _____





2. Point and say.

Excuse me, where's the _____ ?
 It's _____ the _____ .



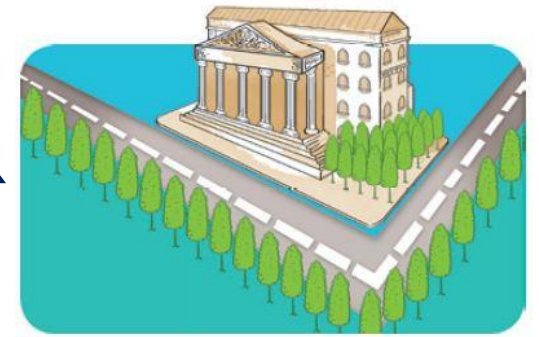
the bus stop
 next to
 the stadium



pharmacy
 opposite
 market



theatre
 between
 cinema/ supermarket



museum
 on the corner
 of the street





3. Let's talk.



Where's the _____?

It's next to/opposite _____.

It's between _____ and _____.

It's on the corner of _____.

Turn right/left _____.





4. Listen and tick. 

	Opposite the pharmacy	Between the supermarket and the cinema	Next to the stadium	Go along the street and turn left
1. The museum			✓	
2. The supermarket				✓
3. The bus stop	✓			
4. The post office		✓		





5. Look, read and complete.

on the corner

opposite

opposite

next to

between



1. The theatre is opposite the stadium.

2. The cinema is between the theatre and the supermarket.

3. The stadium is on the corner of the street.

4. Bus stop 1 is opposite Bus stop 2.

5. The post office is next to Bus stop 1.





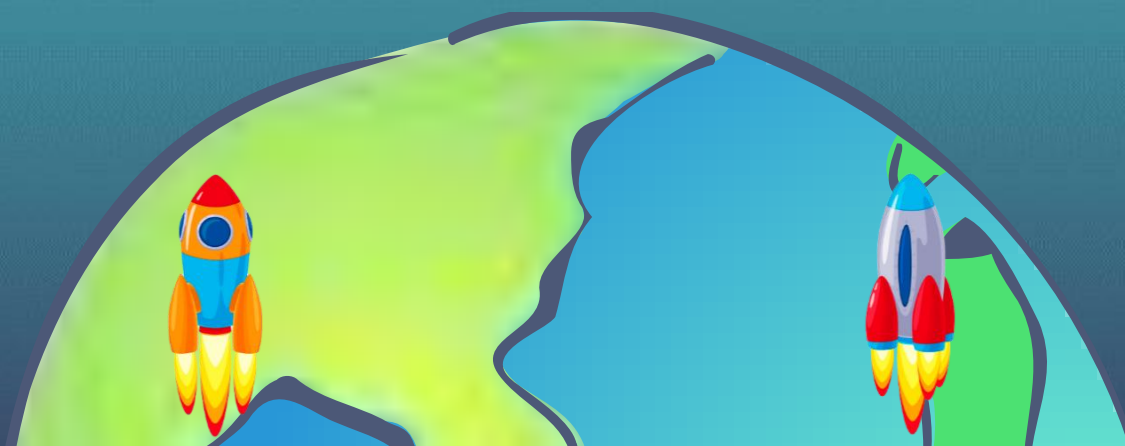
ĐUA TÊN LỬA?

Start





Next



Thử thách 1





Excuse me, where's the post office?



It's opposite the pharmacy.

Xem đáp án





Excuse me, _____?
It's at the end of Pear Street



Where's the theatre?

Xem đáp án





Excuse me, where's the hospital?



**It's between the
railway station and
the stadium.**

Xem đáp án





Excuse me, where's the cinema?



**It's next to the
theatre.**

Xem đáp án





_____, where's the supermarket?
It's on the corner of the street.



Excuse me

Xem đáp án





Excuse me, where's the _____?
The museum is near the bus stop.



the museum

Xem đáp án





6. Let's sing.



Where's the bus stop?

Excuse me, where's the bus stop?

Where's the bus stop?

Go straight ahead.

It's on the corner,

At the end of the street.

Excuse me, where's the park?

Where's the park?

Go straight ahead.

Then turn left.

It's opposite the museum.

