

LĨNH VỰC: PHÁT TRIỂN NHẬN THỨC

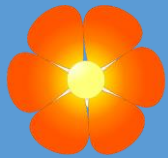
HOẠT ĐỘNG: LÀM QUEN VỚI TOÁN

Chủ đề tài: Sắp xếp theo quy tắc 3 loại đối tượng

Độ tuổi: 5-6 tuổi



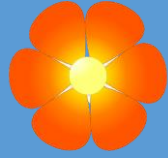
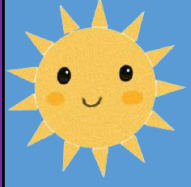




A

B

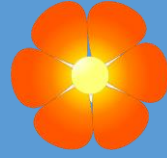
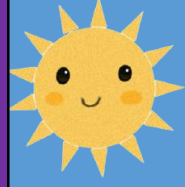
C



A

B

C



A

B

C

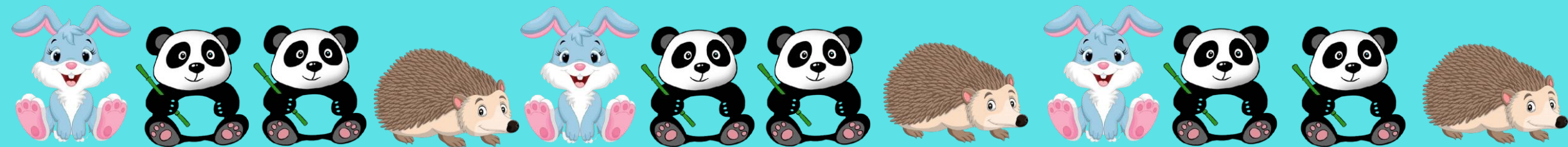
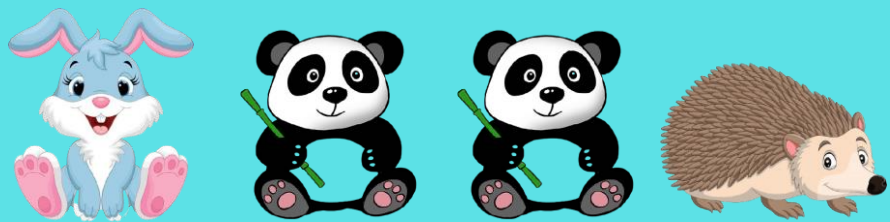


Quy tắc sắp xếp A B C



A B C A B C A B C

A B B C



A B B C

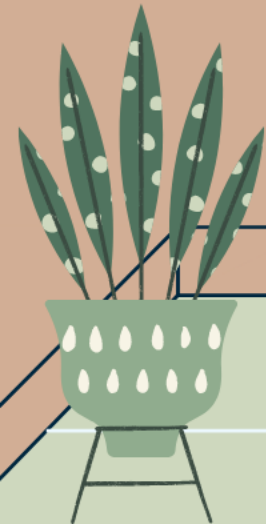


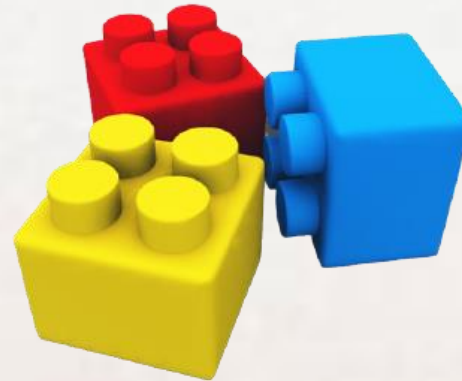
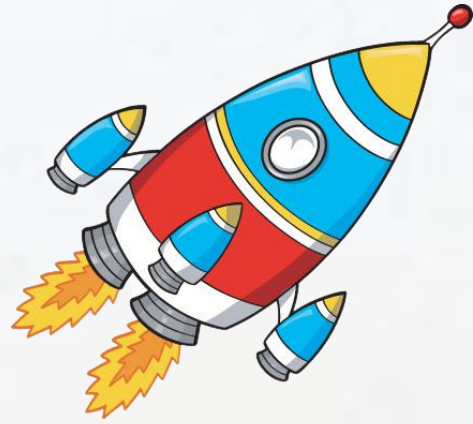
AABC

AABCC

ABBCC

AABBC





Trò chơi: Bé tài giỏi



1

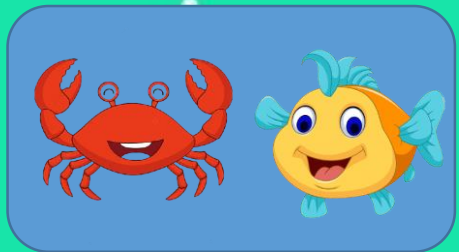


2





1



2



3



AABCC

