

# Unit 20 – Lesson 1

## Where's Sa Pa?

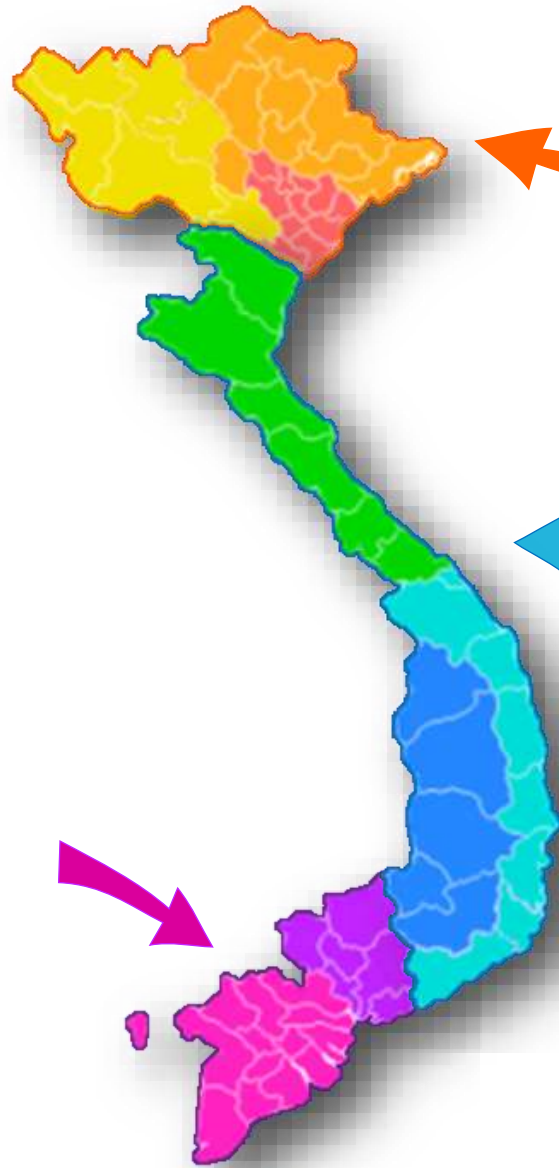


# VOCABULARY



# Vocabulary

**South**  
/saʊθ/



**North**  
/nɔːrθ/

**Central**  
/ˈsentrəl/



# Vocabulary



# City

*/'siti/*



# Vocabulary



**bay**

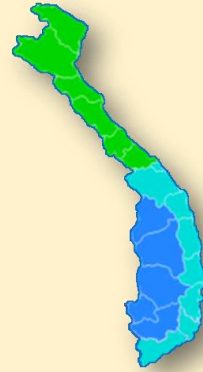
**/beɪ/**



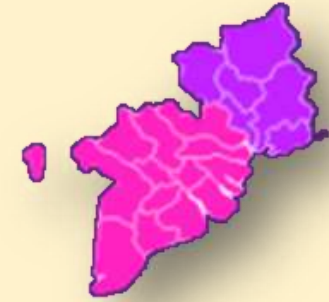
# Vocabulary



north



central



south



City



bay



**central**



**south**



**north**













city



bay



south



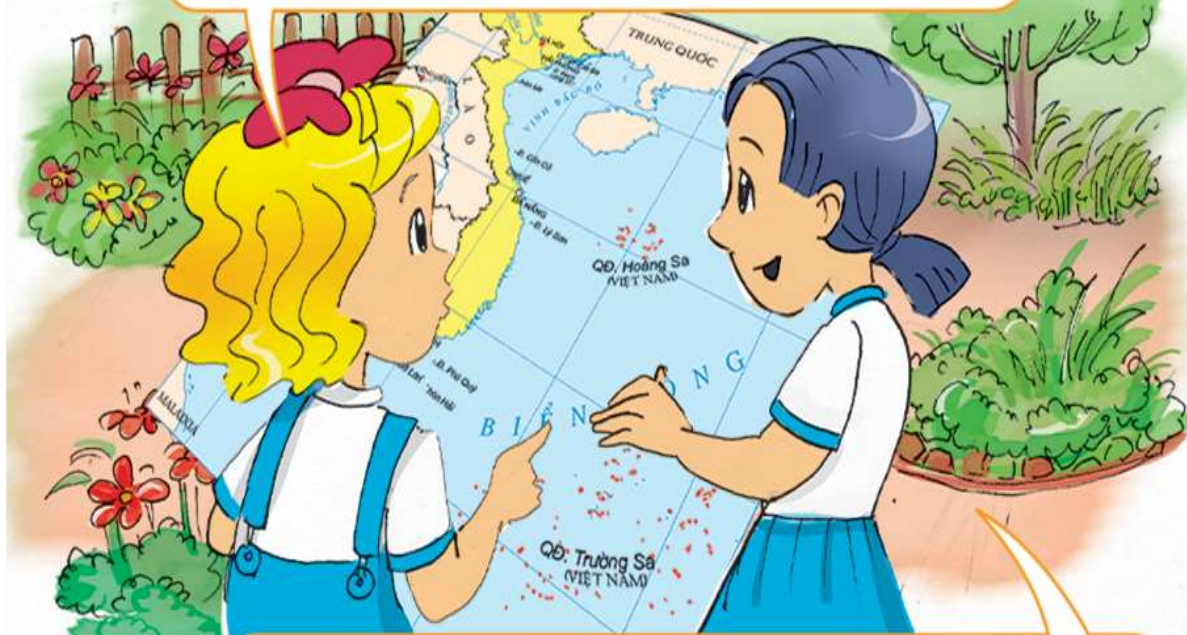
# GRAMMAR



# 1. Look, listen and repeat

a

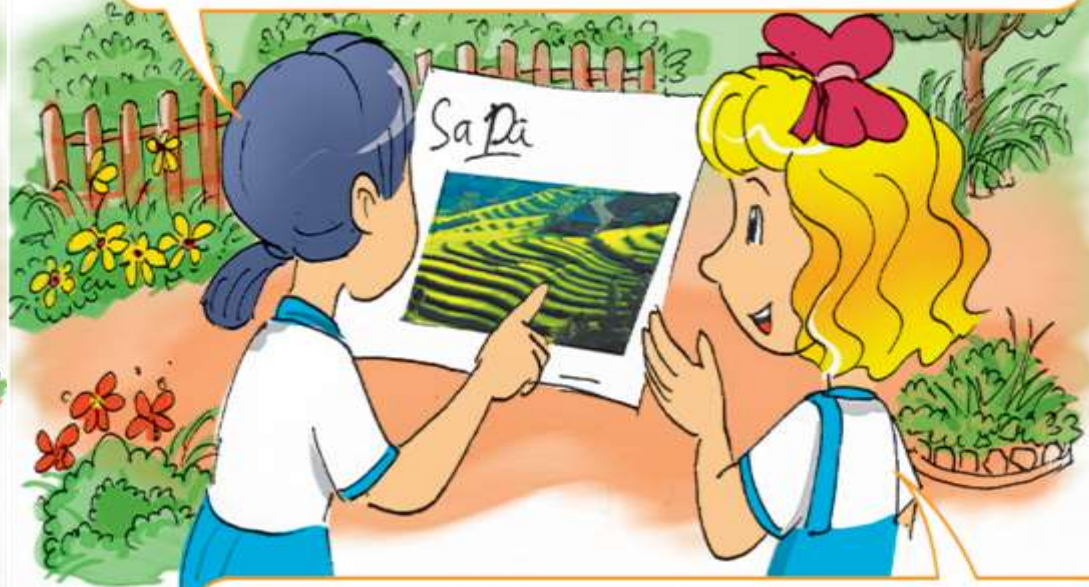
Where's Sa Pa, Mai?



It's in north Viet Nam.

b

This is a photo of Sa Pa.



Oh! It's very beautiful.



## 2. Point and say

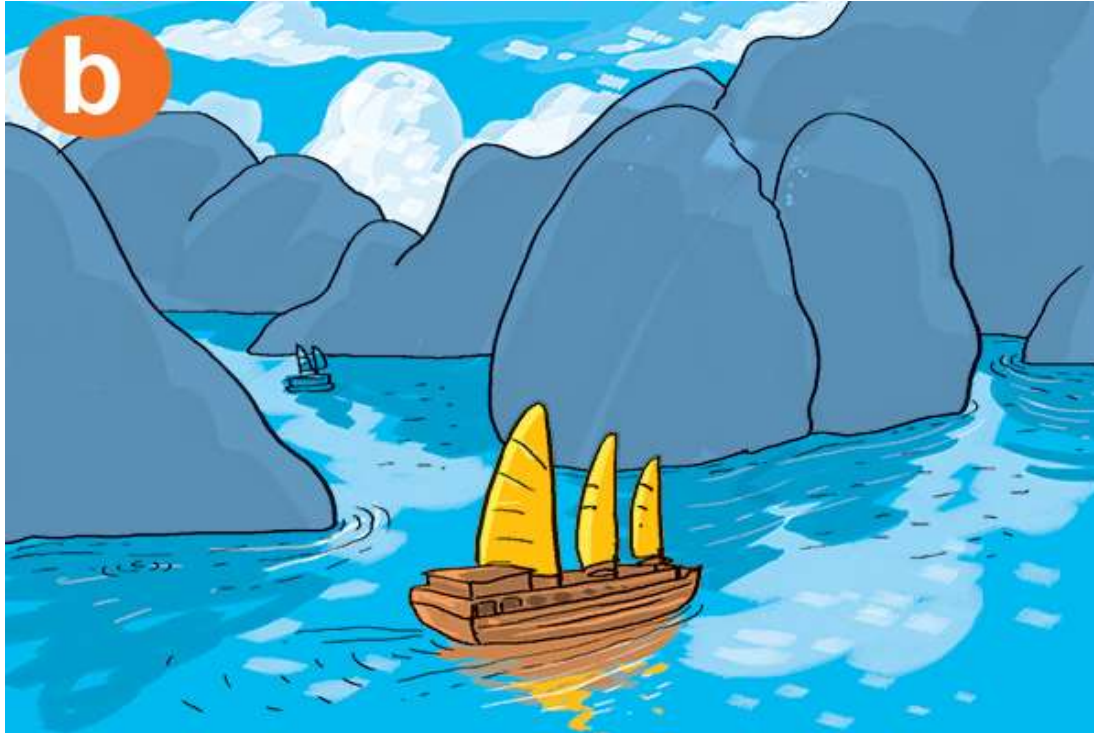


Where's Ha Noi ?



It's in north Viet Nam.





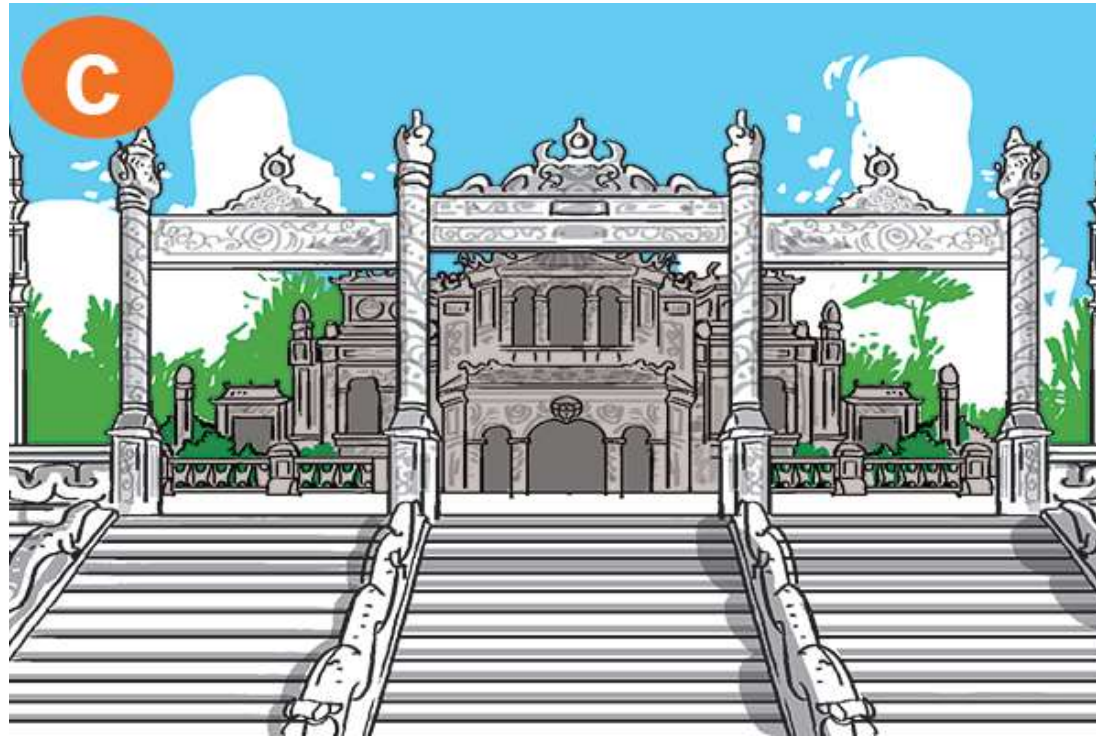
Where's Ha Long Bay?



It's in north Viet Nam.



## 2. Point and say



Where's Hue ?



It's in central Viet Nam.



## 2. Point and say



 Where's Ho Chi Minh City?

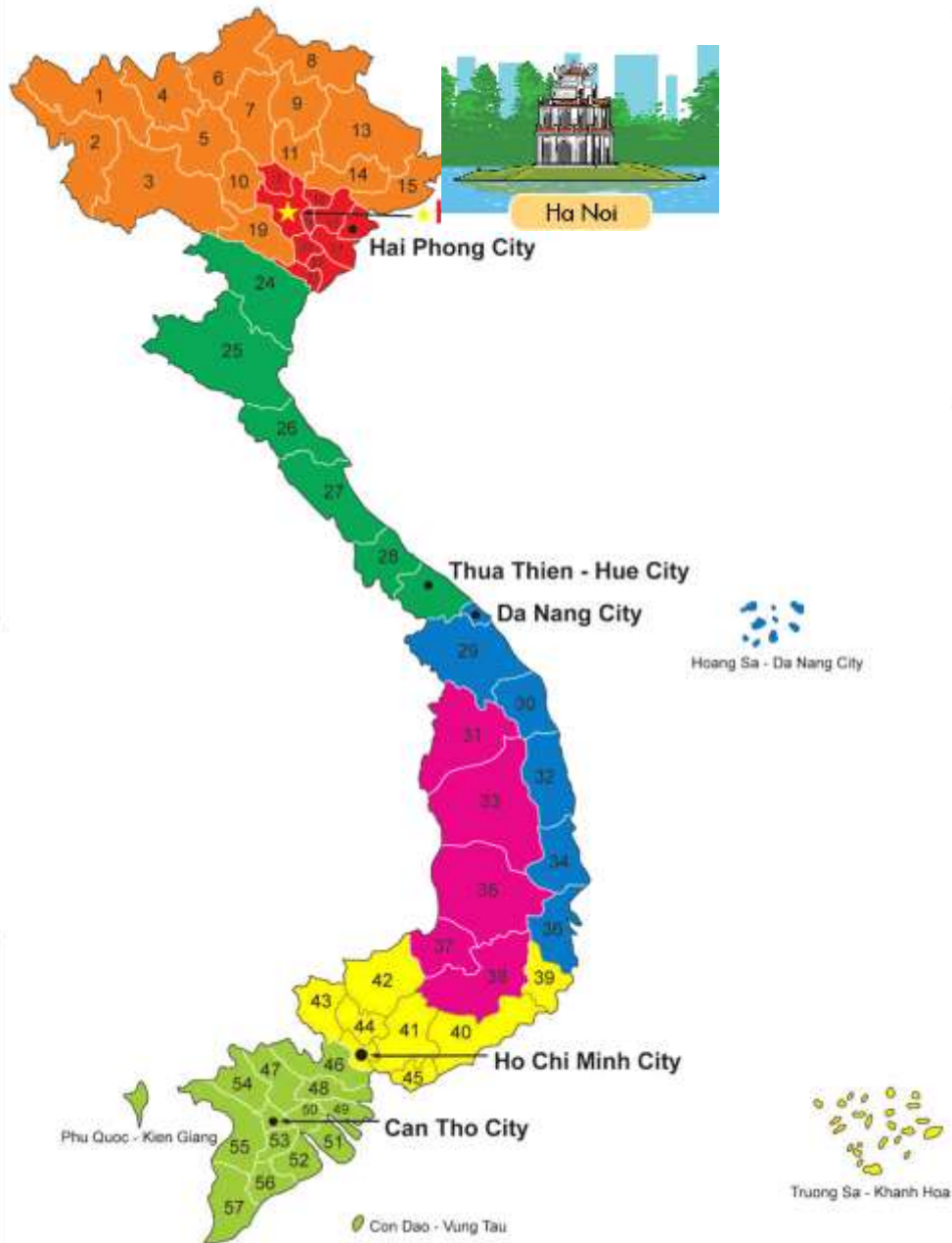
 It's in south Viet Nam.

### 3. Let's talk

Where's Ha Long Bay ?

It's in north Viet Nam.





This is the map of Vietnam – my hometown.  
 This is the north. It's hot or cold or cool.  
 This is the central. It is hot.  
 This is the south. It is cool and rainy.  
 This is HA Noi. It is in north.  
 This is Hai Phong city. It is in north. I live in HP. I love it.  
 .....  
 Viet nam is beautiful. Do you like Viet Nam?

### 3. Let's talk

Where's Nam Dinh ?

It's in north Viet Nam.



### 3. Let's talk

Where's Da Nang ?

It's in central Viet Nam.



### 3. Let's talk

Where's Can Tho ?

It's in south Viet Nam.



### 3. Let's talk

Where's Vung Tau ?

It's in south Viet Nam.



# 4. Listen and tick.



1



a



Ha Noi



2



a



Ha Long Bay



3



a



Hue



b



Da Nang



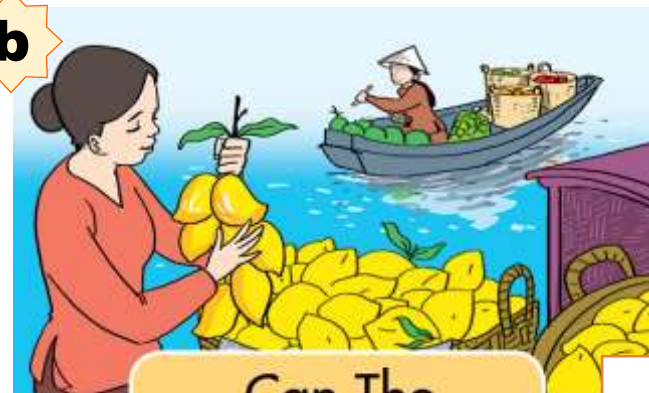
b



Ho Chi Minh City



b



Can Tho





# Model sentence

Where's \_\_\_\_\_ ?  
It's in \_\_\_\_\_ Viet Nam.



north

central

south





## 6. Let's write



This is Ha Long Bay.

It is in north Viet Nam.



This is Da Nang.

It is in central Viet Nam.



This is Ho Chi Minh City.

It is in south Viet Nam.



## 6. Let's write

1. Where is your family?

My family is in \_\_\_\_\_.

2. Where is your city?

My city is in \_\_\_\_\_.

3. Do you like your place (city / town / village)?

\_\_\_\_\_.





# Brown squirrel & acorn

PLAY

A cartoon illustration of a forest scene. In the center, a wooden sign with a white background contains the text. Below the sign are four wooden buttons with prepositions. To the right, a squirrel is perched on a tree branch, and another squirrel is jumping. To the left, two squirrels are sitting on a log. A wooden arrow with the word 'Next' points to the right. The background features green trees and a blue sky.

**Where is your family live?  
My family is \_\_\_\_ Hai Phong.**

**on**

**under**

**in**

**behind**

**Next** 

Where is Hai Phong?  
It's in \_\_\_\_\_ Viet Nam.

city

north

central

south

Next



Where is Can Tho?  
It's in \_\_\_\_\_ Viet Nam.



a city



central

north

south



Next

A vibrant cartoon illustration of a forest. In the center, a wooden sign with a white background contains a question and a blank space. Below the sign are four wooden buttons with text options. To the right, a squirrel is perched on a tree branch, and another squirrel is jumping. On the left, two more squirrels are sitting on a log. The background features large green trees and a blue sky.

Where is Ha Long Bay?  
It's \_\_\_\_\_ Viet Nam.

in north

on north

the north

north in

Next 



A cartoon illustration of a forest scene. In the center, a wooden sign with a white background contains the text 'Where is Hue? It's in \_\_\_\_\_ Viet Nam.' Below the sign are four wooden buttons with the words 'central', 'south', 'north', and 'the central'. To the right, a squirrel is perched on a tree branch, and another squirrel is jumping. To the left, two more squirrels are sitting on a log. A wooden arrow with the word 'Next' points to the right. The background features green trees and a blue sky.

**Where is Hue?**  
**It's in \_\_\_\_\_ Viet Nam.**

**central**

**south**

**north**

**the central**

**Next**



Where is Ho Chi Minh City?  
It's in \_\_\_\_\_ Viet Nam.



north

central

south

city



Next



Where is Da Nang city?  
It's in \_\_\_\_\_.

North Viet Nam

South

Central Viet Nam

a city

Next

A cartoon illustration of a forest scene. In the center, a wooden sign with a white background contains the text "Nam Dinh is in North Viet Nam." Above the sign is a small basket of acorns. To the right, a squirrel is perched on a tree branch, and another squirrel is sitting on the ground. In the bottom left corner, two more squirrels are sitting on a log. The background shows green trees and a blue sky.

\_\_\_\_\_

**Nam Dinh is in North Viet Nam.**


**Where is Ho Chi Minh city?**

**Where is Hai Phong?**

**What is Nam Dinh?**

**Where is Nam Dinh?**

**Next** 

A colorful illustration of a forest scene. In the center, a wooden sign with a white background contains the text 'Where \_\_\_\_ Thai Binh?'. Below the sign are four wooden buttons with the words 'it', 'are', 'do', and 'is'. To the right, a squirrel is perched on a tree branch, and another squirrel is jumping. To the left, two more squirrels are sitting on a log. A wooden arrow with the word 'Next' points to the right. The background features green trees and a blue sky.

Where \_\_\_\_ Thai Binh?

it

are

do

is

Next

Where is Ha Noi?  
\_\_\_\_\_ in north Viet Nam.

Is it

It is

It

Is

Next

# Game over!



**EXIT**

