

Unit 2: City life

Lesson 4: Communication





OBJECTIVES

After this lesson, Ss will be able to:



Everyday English

Offer help and respond



Transport in the city

About their favourite means of transport

★ New words

traffic jam (n)



/'træf.ɪk ,dʒæm/

Ùn tắc giao thông



★ New words

rush hour (n)



/'rʌʃ ,aʊər/

giờ cao điểm



★ New words

tram

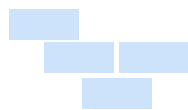


/træm/

Xe điện



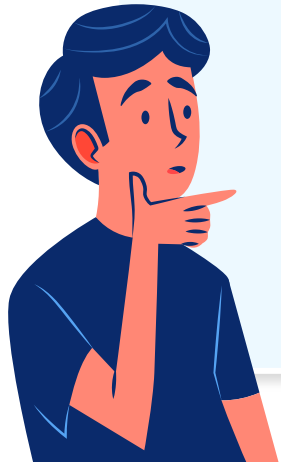
★ New words



<i>Words</i>	<i>Pronunciation</i>	<i>Meanings</i>
<i>convenient</i> (adj)	/kən 'vi:ni.ənt/	Thuận tiện, tiện nghi
<i>traffic jam</i> (n)	/'træf.ɪk ,dʒæm/	Ùn tắc giao thông
<i>rush hour</i> (n)	/'rʌʃ ,aʊər/	Giờ cao điểm
<i>tram</i>	/træm/	Xe điện

I. Everyday English

Offer help and respond



Ex1: Listen and read the conversations below. Pay attention to the underlined parts.



1

Duong's dad: I can take you to the airport if you like

Duong: Thanks, Dad.

2

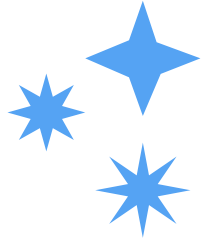
Minh: Would you like me to give you a ride home

Hoang: Thank you. That's so kind of you

Offering help	Responding
Duong's dad: <u>I can</u> take you to the airport if you like	Duong: <u>Thanks</u> , Dad.
Minh: <u>Would you like me to</u> give you a ride home	Hoang: <u>Thank you</u> . That's so kind of you



Ex2: Work in pairs. Make similar conversations with the following situations.



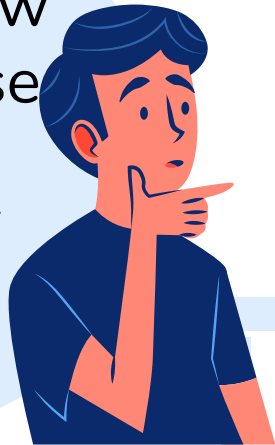
1. Your friend doesn't know how to use the library smart card. You offer to show him/her
2. A teacher wants to talk to Ms Hoa, but she is not there. You offer to write a note for Ms Hoa.

Ex2: Work in pairs. Make similar conversations with the following situations.



1. Your friend doesn't know how to use the library smart card. You offer to show him/her

You: I can show you how to use the library smart card if you want.



Your friend:
That would be great,
thanks!



Ex2: Work in pairs. Make similar conversations with the following situations.



2. A teacher wants to talk to Ms Hoa, but she is not there. You offer to write a note for Ms Hoa.

You: Would you like me to write a note for Ms Hoa?



**Teacher: Thank you.
That's so kind of you.**



II. Transport in the city

About their favourite means of transport



★ **Ex3: Work in pairs. Read the descriptions of three teenagers about their favourite means of transport. Then complete the table below.** ★

Hoang: I live in the suburbs of Ha Noi. I use my bike to get around. It's convenient because I can ride it to places where the bus line doesn't reach. Going by bike might be a bit slow, but I can avoid traffic jams.

Cholada: My favourite means of transport in Bangkok is the sky train. It's crowded at rush hour, but it's always on time. It doesn't get stuck in traffic jams, so I can save time travelling.

Kathy: I love the tram in Melbourne. It offers a discount for students. Sometimes the tram is late, but it always updates its arrival on a smartphone app, so I know in advance and arrange my time easily. ★

Ex3: Work in pairs. Read the descriptions of three teenagers about their favourite means of transport. Then complete the table below.



Name	Favourite means of transport	Advantage(s)	Drawback(s)	Why using it
Hoang	bike	convenient	slow	avoid (1) <u>noun</u>
Cholada	(2) <u>noun</u>	on time	(3) <u>verb</u> at rush hour	save time travelling
Kathy	(4) <u>noun</u>	(5) <u>verb</u> for students	late	arrange time easily

Ex3: Work in pairs. Read the descriptions of three teenagers about their favourite means of transport. Then complete the table below.



Name	Favourite means of transport	Advantage(s)	Drawback(s)	Why using it
<i>Hoang</i>	bike	convenient	slow	avoid (1) traffic jams
<i>Cholada</i>	(2)_____	on time	(3)_____ at rush hour	save time travelling
<i>Kathy</i>	(4)_____	(5)_____ for students	late	arrange time easily

1. Going by bike might be a bit slow, but I can avoid **traffic jams**.

Ex3: Work in pairs. Read the descriptions of three teenagers about their favourite means of transport. Then complete the table below.



Name	Favourite means of transport	Advantage(s)	Drawback(s)	Why using it
<i>Hoang</i>	bike	convenient	slow	avoid (1) traffic jams
<i>Cholada</i>	(2) sky train	on time	(3) _____ at rush hour	save time travelling
<i>Kathy</i>	(4) _____	(5) _____ for students	late	arrange time easily

2. My favourite means of transport in Bangkok is the **sky train**.

Ex3: Work in pairs. Read the descriptions of three teenagers about their favourite means of transport. Then complete the table below.



Name	Favourite means of transport	Advantage(s)	Drawback(s)	Why using it
<i>Hoang</i>	bike	convenient	slow	avoid (1) <u>traffic jams</u>
<i>Cholada</i>	(2) <u>sky train</u>	on time	(3) <u>crowded</u> at rush hour	save time travelling
<i>Kathy</i>	(4) _____	(5) _____ for students	late	arrange time easily

3. It's **crowded** at rush hour, but it's always on time.



Ex3: Work in pairs. Read the descriptions of three teenagers about their favourite means of transport. Then complete the table below.



Name	Favourite means of transport	Advantage(s)	Drawback(s)	Why using it
<i>Hoang</i>	bike	convenient	slow	avoid (1) <u>traffic jams</u>
<i>Cholada</i>	(2) <u>sky train</u>	on time	(3) <u>crowded</u> at rush hour	save time travelling
<i>Kathy</i>	(4) <u>tram</u>	(5) _____ for students	late	arrange time easily

4. I love the **tram** in Melbourne.

Ex3: Work in pairs. Read the descriptions of three teenagers about their favourite means of transport. Then complete the table below.



Name	Favourite means of transport	Advantage(s)	Drawback(s)	Why using it
Hoang	bike	convenient	slow	avoid (1) <u>traffic jams</u>
Cholada	(2) <u>sky train</u>	on time	(3) <u>crowded</u> at rush hour	save time travelling
Kathy	(4) <u>tram</u>	(5) <u>discount</u> for students	late	arrange time easily

5. It offers a **discount** for students.



Ex4: Make notes about a means of transport you are using.

- 
- 
- 
- 
- Name of the means of transport

bus

- Its advantage(s) and drawback(s)

near house and school, clean, on time, air conditioning

- Why you choose to use it

crowded at rush hour

Ex5: Work in groups. Talk to your friends about the means of transport that you use. Use your notes in 4.



Note in 4:

- Transport: bus
- Advantage(s) and drawback(s): near house and school, clean, on time, air conditioning
- Why you choose to use it: crowded at rush hour

Ex5: Work in groups. Talk to your friends about the means of transport that you use. Use your notes in 4.

Suggested answer:

I go to school by bus every day. It is convenient because there are bus stops near my house and my school. The bus is clean and on time. It is very crowded at rush hour, but it has air conditioning so it is cool. That's why I choose to use it.

SWAP AND CHECK

Check for spelling

Do the words spell correctly?

Check for ideas

Does your friend write about the means of transport that you use?

Check for comprehension

Does the writing make sense?

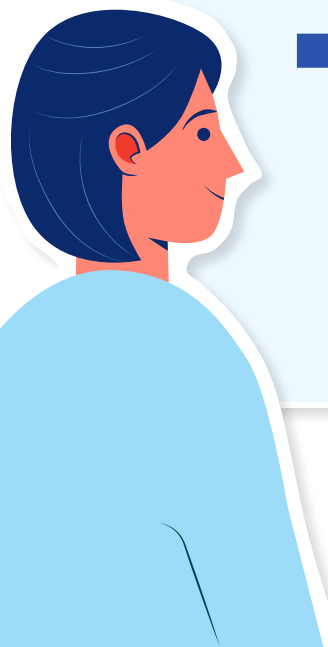
Check for grammar

Does the writing use the correct tenses and structures?

★ Wrap – up:

What have we learnt in this lesson?

- ✓ Offer help and respond to an offer;
- ✓ Talk about means of transport that they use.



Thank you!

