

Unit 2

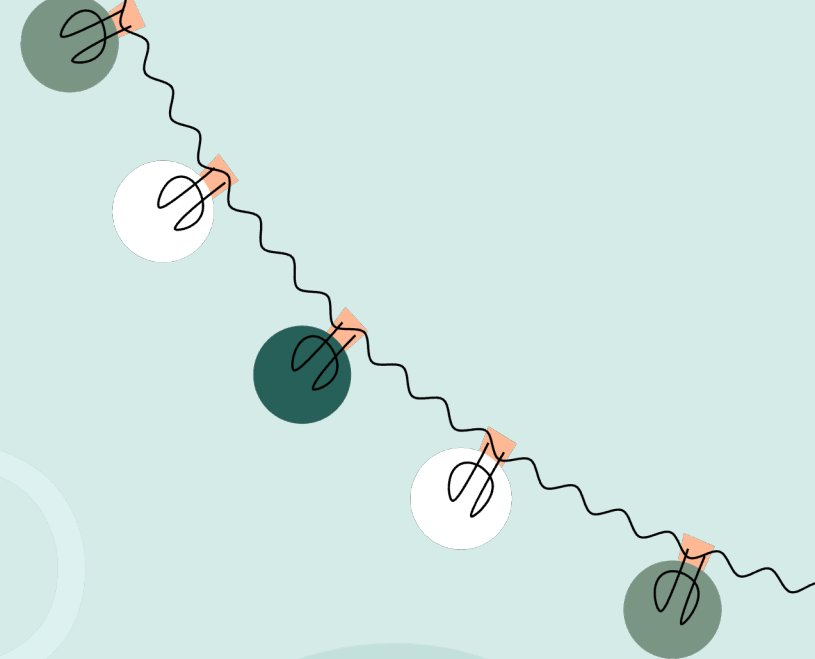
Holidays

Lesson 1 - Part 2





warm-



Halloween



New Year's Eve



?	?	?
?	?	?
?	?	?

Lunar New Year (Tết)



?	?	?
?	?	?
?	?	?

Christmas



?	?	?
?	?	?
?	?	?

Teachers' Day



?	?	?
?	?	?
?	?	?

Children's Day



Review

Children's Day



Christmas



Teachers' Day



What's your
favorite holiday?
- It's _____.



Lunar New Year (Tết)



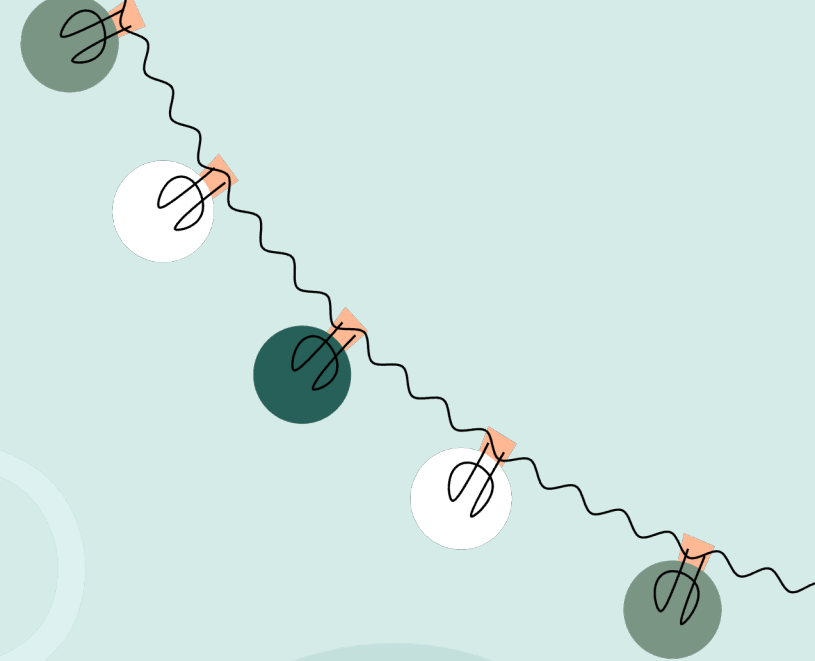
New Year's Eve



Halloween



Stress





C

1. Listen and repeat. 

'Christmas, 'Teachers' Day,
'Children's Day

'Christmas

'Teachers' Day

'Children's Day





2. Chant. Turn to page 123.



What's your favorite holiday, Tom?

Is it Christmas?

No, it's not.

It's Children's Day.

What's your favorite holiday, Ben?

Is it Teachers' Day?

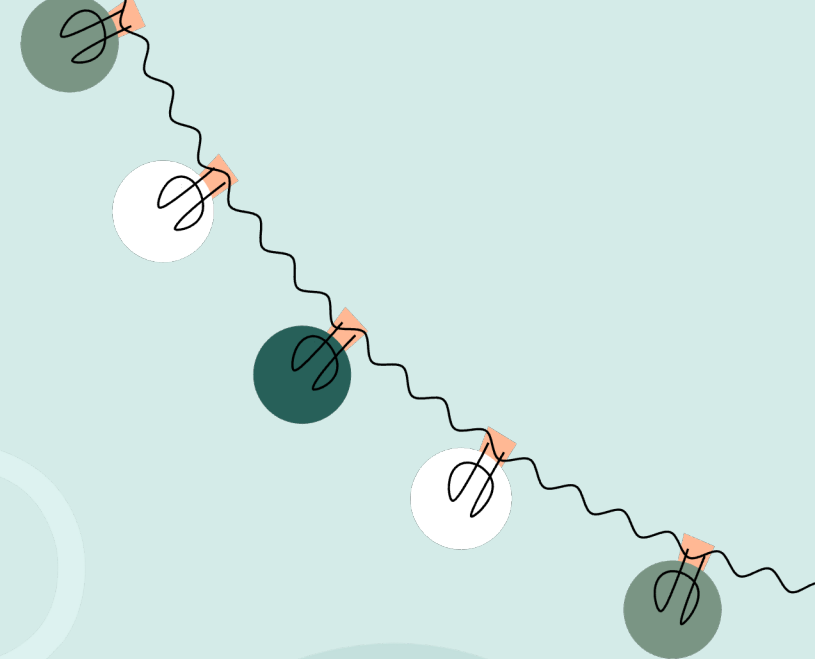
No, it's not.

It's Christmas.





Listening



Who can you see? - Tom, Ben, Lucy, Alfie





Where are they?

They're at school.





D

1. Describe the comic. Use the new words. Listen.





2. Listen and circle.



1

Tom: Yay! Today is Children's Day!

Ben: I want some candy today.

Lucy: Mmm. Me too. What's your favorite holiday, Ben?

Ben: Oh, it's (1) **Halloween/Christmas** because I get lots of candy on that day.

Lucy: Yum!

2

Ben: And you, Lucy? What's your favorite holiday? Is it Children's Day?

Lucy: No.

Ben: Is it Teachers' Day?

Lucy: No. It's (2) **New Year's Eve/Lunar New Year**. I go to bed late that night.

Ben: Oh, OK.

3

Ben: Tom, we're talking about our favorite holidays.

Tom: Oh, nice.

Lucy: What's your favorite holiday?

Tom: Oh, it's (3) **Teachers' Day/Children's Day**.

Ben: Really? Wow.

4

Tom: Hey, Alfie. What about you?

Alfie: Huh?

Tom: What's your favorite holiday?

Alfie: Oh, easy. It's (4) **Halloween/Children's Day** because I can wear funny clothes.

Everyone: Haha. Oh, Alfie.





2. Listen and circle.



Tom: Yay! Today is Children's Day!

Ben: I want some candy today.

Lucy: Mmm. Me too. What's your favorite holiday, Ben?

Ben: Oh, it's (1) *Halloween/Christmas* because I get lots of candy on that day.

Lucy: Yum!





2. Listen and circle.



Ben: And you, Lucy? What's your favorite holiday? Is it Children's Day?

Lucy: No.

Ben: Is it Teachers' Day?

Lucy: No. It's (2) ***New Year's Eve/ Lunar New Year***. I go to bed late that night.

Ben: Oh, OK.





2. Listen and circle.



Ben: Tom, we're talking about our favorite holidays.

Tom: Oh, nice.

Lucy: What's your favorite holiday?

Tom: Oh, it's (3) *Teachers' Day/ Children's Day.*

Ben: Really? Wow.





2. Listen and circle.



Tom: Hey, Alfie. What about you?

Alfie: Huh?

Tom: What's your favorite holiday?

Alfie: Oh, easy. It's (4) **Halloween/**
Children's Day because I can wear
funny clothes.

Everyone: Haha. Oh, Alfie.





Let's play!

Play



Lucy: What's your favorite holiday, Ben?

Ben: It's Christmas.



True



False

Next



Ben likes Halloween because he gets lots of candy on that day.



True



False

Next



What's your favorite holiday, Lucy?

It's New Year's Eve.



True



False

Next



On children's Day, Lucy goes to bed late.



True



False

Next

Lucy: What's your favorite holiday?

Tom: It's Teachers' Day.



True



False

Next

What's your favorite holiday, Alfie?

It's Lunar New Year.



True



False

Next





Alfie likes Halloween because
he can wear funny clothes.



True



False

Next



Well done !



Next

3. Role-play.



1

Tom: Yay! Today is Children's Day!

Ben: I want some candy today.

Lucy: Mmm. Me too. What's your favorite holiday, Ben?

Ben: Oh, it's (1) **Halloween/Christmas** because I get lots of candy on that day.

Lucy: Yum!

2

Ben: And you, Lucy? What's your favorite holiday? Is it Children's Day?

Lucy: No.

Ben: Is it Teachers' Day?

Lucy: No. It's (2) **New Year's Eve/Lunar New Year**. I go to bed late that night.

Ben: Oh, OK.

3

Ben: Tom, we're talking about our favorite holidays.

Tom: Oh, nice.

Lucy: What's your favorite holiday?

Tom: Oh, it's (3) **Teachers' Day/Children's Day**.

Ben: Really? Wow.

4

Tom: Hey, Alfie. What about you?

Alfie: Huh?

Tom: What's your favorite holiday?

Alfie: Oh, easy. It's (4) **Halloween/Children's Day** because I can wear funny clothes.

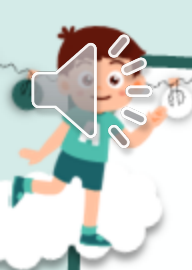
Everyone: Haha. Oh, Alfie.





Workbook





Extra Practice
WB, page 13



Listen and put a tick (✓) or a cross (✗).



1



2



3



4





Extra Practice
WB, page 13



Look and write.

1



A: What's your favorite holiday?

B: It's _____ New Year's Eve _____.





Extra Practice
WB, page 13

D Look and write.

2



A: What's her favorite holiday?

B: It's Children's Day.

3



A: What's his favorite holiday?

B: It's Lunar New Year.





Look and write.

4



A: What's your favorite holiday?

B: It's Christmas Day.

5



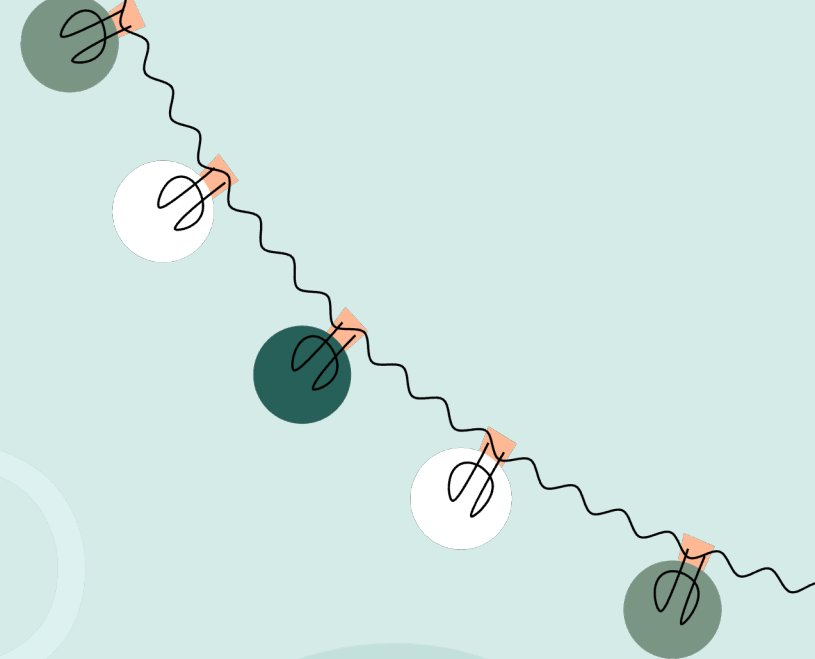
A: What's her favorite holiday?

B: It's Teachers' Day.





Wrap-up



Review

Children's Day



Christmas



Teachers' Day



What's your
favorite holiday?
- It's _____.



Lunar New Year (Tết)



New Year's Eve



Halloween



THANK YOU

For joining!