

Unit 2

# Holidays

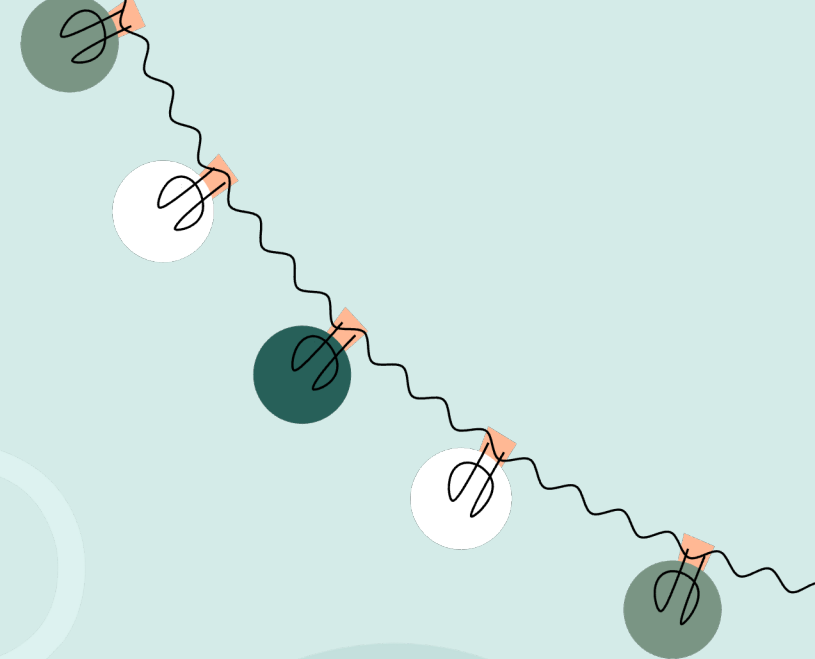
Lesson 2 - Part 1







warm-











# Vocabulary







**A**

**1. Listen and point. Repeat.**



**first**



**second**



**third**



**fourth**



**fifth**







**A**

# 1. Listen and point. Repeat.



# first

/fɜːrst/

thứ nhất







**A**

**1. Listen and point. Repeat.**



**second**

*/'sekənd/*

thứ hai







A

1. Listen and point. Repeat.



third

/θɜ:rd/

thứ ba







**A**

**1. Listen and point. Repeat.**



**fourth**

/fɔːrθ/

thứ tư







**A**

# 1. Listen and point. Repeat.



**fifth**

/fɪfθ/

thứ năm







# Vocabulary



**first**



**second**



**third**



**fourth**



**fifth**





**Choose the  
correct picture.**





# first





# second





# third





# fifth





# fourth





# Great job!



**End**





## 2. Play the game *Slow motion*.







# Slow motion



fifth

Next







# Slow motion



**second**

**Next**







# Slow motion



fourth

Next







# Slow motion



first

Next







# Slow motion



third

Next







## 2. Play the game *Slow motion*.







# Structure







**B**

## 1. Listen and practice.



When's Christmas Day?



It's on  
December twenty-fifth.



### Months of the Year

1	January	7	July
2	February	8	August
3	March	9	September
4	April	10	October
5	May	11	November
6	June	12	December







# Structure

❖ Cách hỏi và trả lời về ngày tháng:

**When's** \_\_\_\_\_ (Ngày lễ) \_\_\_\_\_?

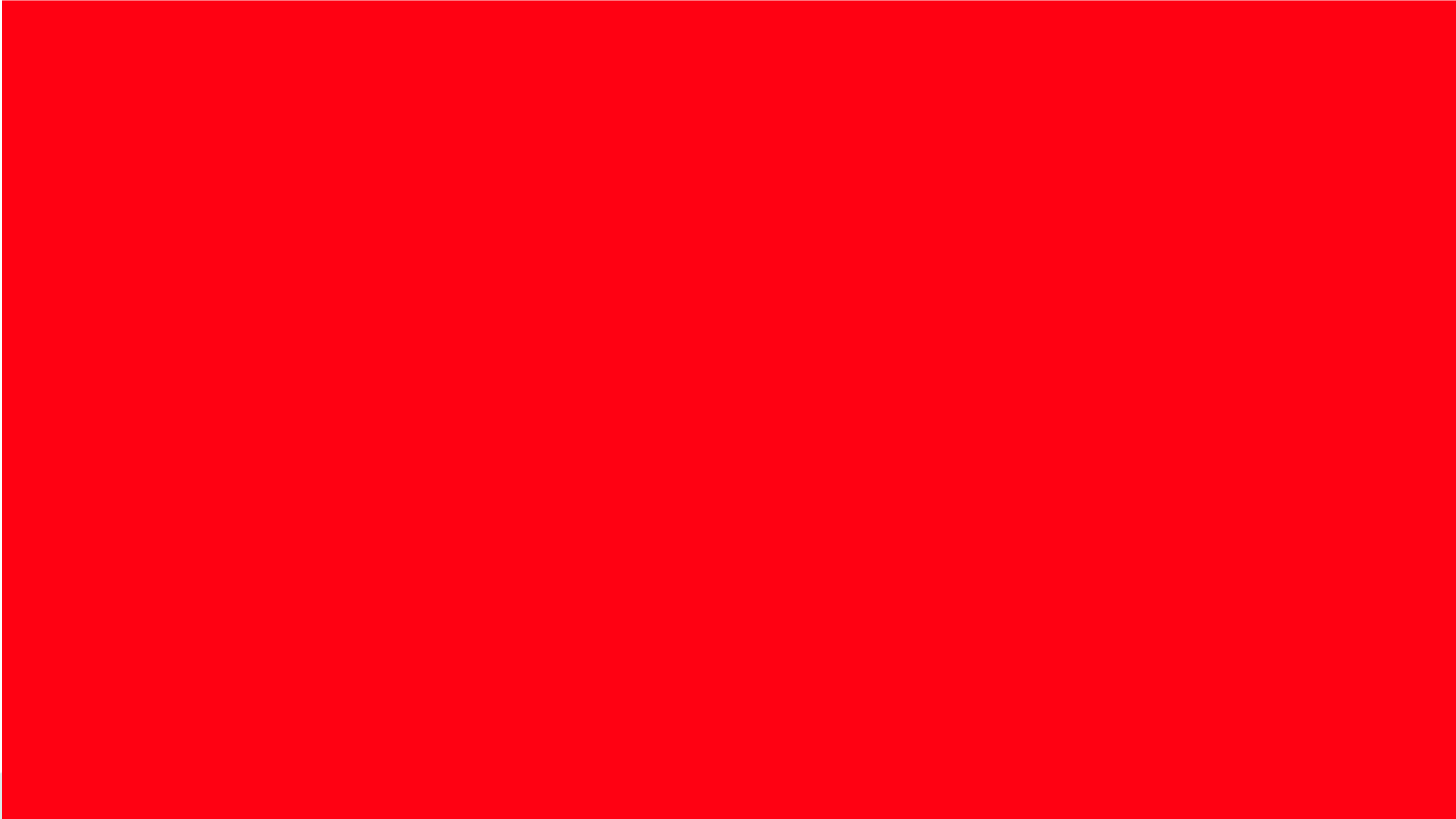
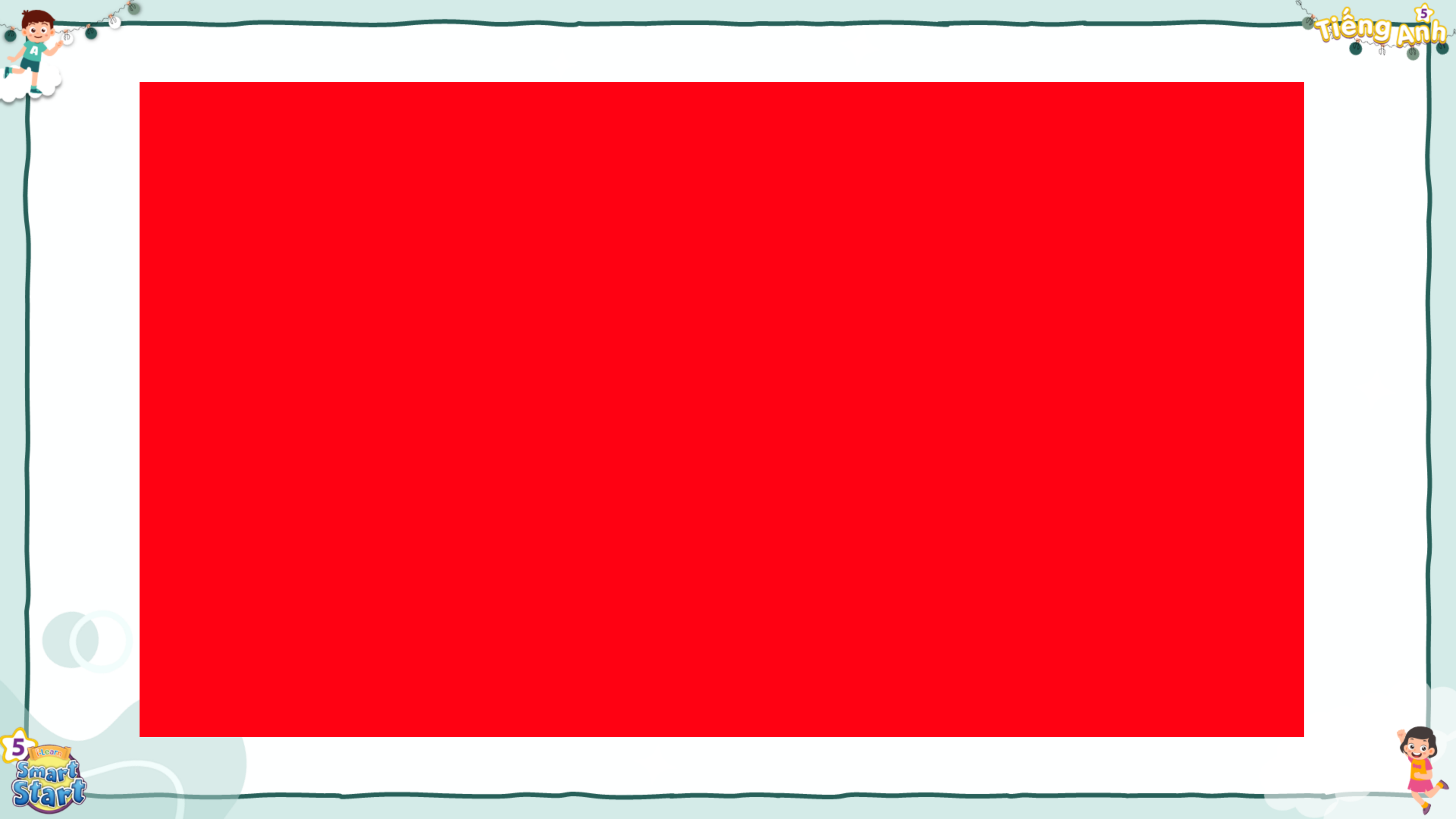
(\_\_\_\_\_ là khi nào?)

**It's on** \_\_\_\_\_ (Tháng) \_\_\_\_\_ (Ngày) \_\_\_\_\_.

(Nó là ngày \_\_\_\_\_ tháng \_\_\_\_\_.)









## 2. Look and write . Practice.



A: When's Children's Day?

B: It's on June first.



A: When's Lunar New Year?

B: It's on January twenty-second



A: When's Teachers' Day?

B: It's on November twentieth.



A: When's Halloween?

B: It's on October thirty-first.





# CROSS THE RIVER

PLAY



When's New Year's Eve?  
It's on \_\_\_\_\_.



A December thirty-first

B thirty-first December

C December thirty-five



Next



When's Christmas?  
It's on \_\_\_\_\_.



A twenty-five December

B December twenty-fifth

C December twenty-five



Next



When's Lunar New Year?  
It's on \_\_\_\_\_.



A

January twenty-  
second

B

January twenty-two

C

twenty-second  
January



Next



When's Children's Day?  
It's on \_\_\_\_\_.



A

June one

B

first June

C

June first



Next



When's Teachers' Day?  
It's on \_\_\_\_\_.



A November twentieth

B November twentieth

C November twenty



Next



**When's Halloween?**  
**It's on \_\_\_\_\_.**



**A**

**October thirty-one**

**B**

**October first**

**C**

**October thirty-first**



**Next**





**Good job!**

**EXIT**





# Workbook



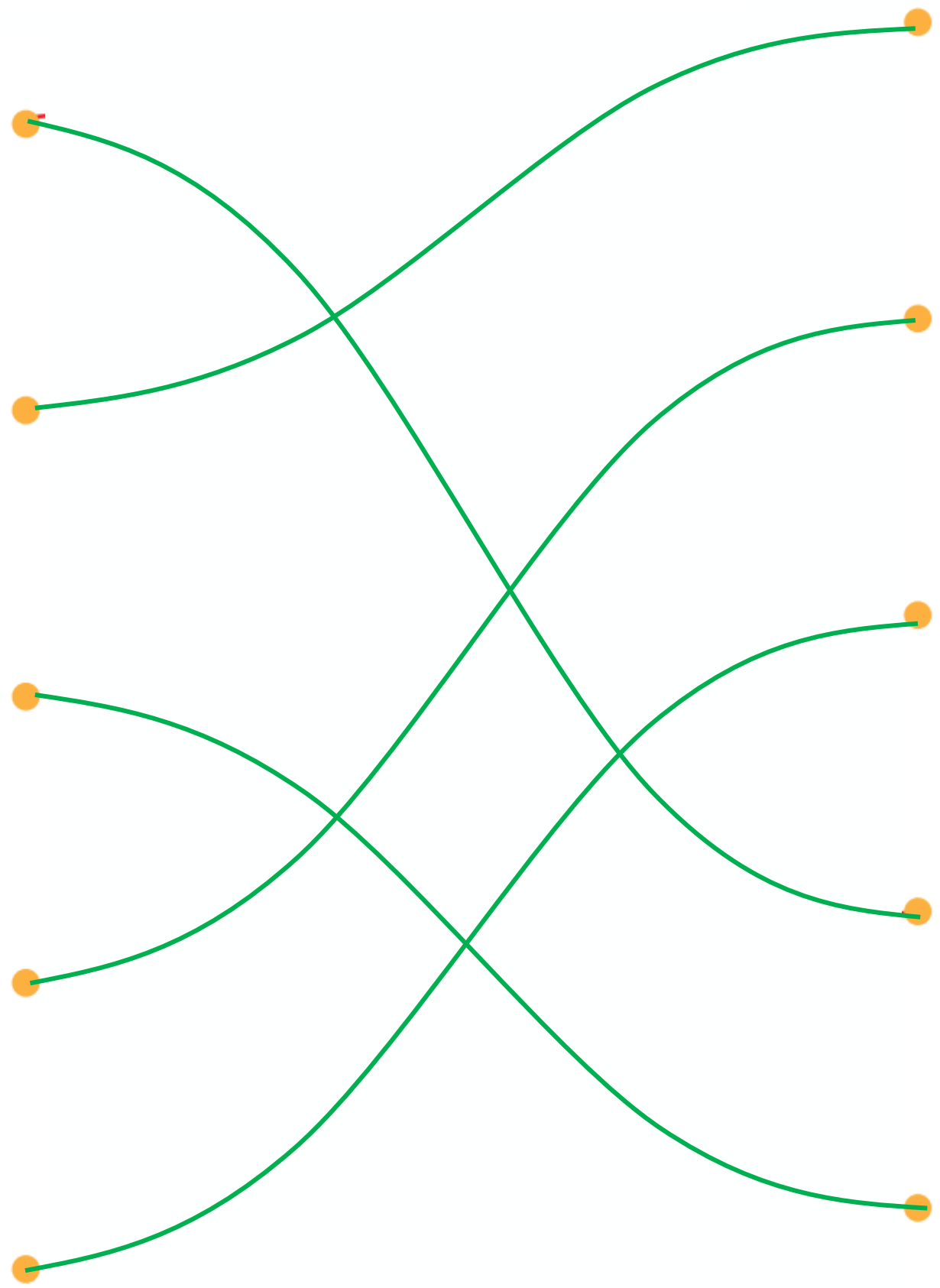




Extra Practice  
WB, page 14

**A** Unscramble and draw lines.

- 1 cnesdo  
second
- 2 dtirh  
third
- 3 frohtu  
fourth
- 4 ristf  
first
- 5 ifhtf  
fifth





Extra Practice  
WB, page 14

**B** Look and circle.



third  
first



second  
fifth



first  
fourth



third  
fourth

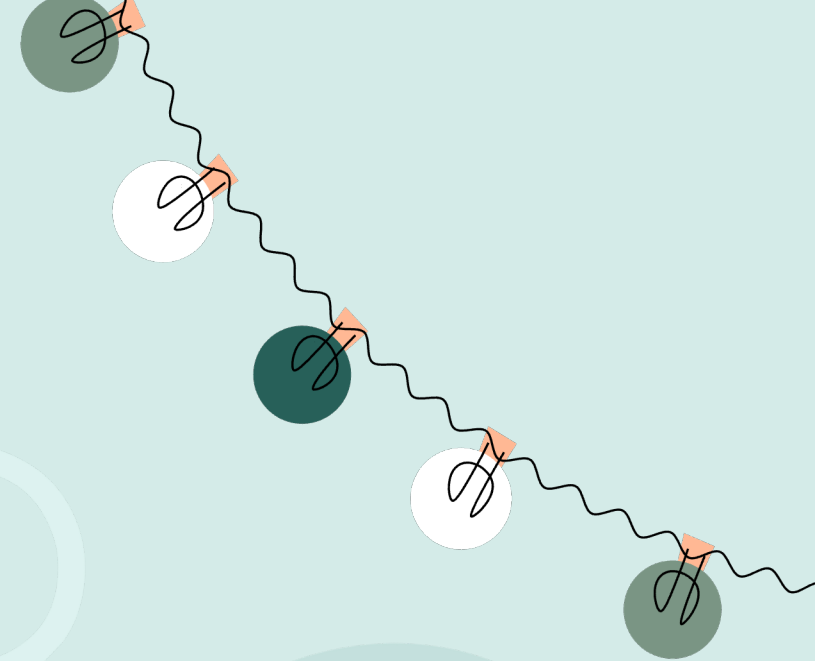


first  
second





# Wrap-up







# Today's lesson



Children's Day



Christmas



Teachers' Day

When's \_\_\_\_\_ ?  
- It's on \_\_\_\_\_ .



Lunar New Year (Tết)



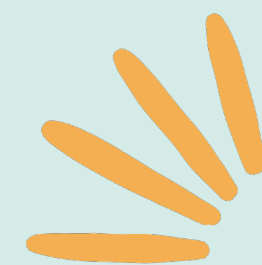
New Year's Eve



Halloween







# THANK YOU



For joining!