

Unit 2

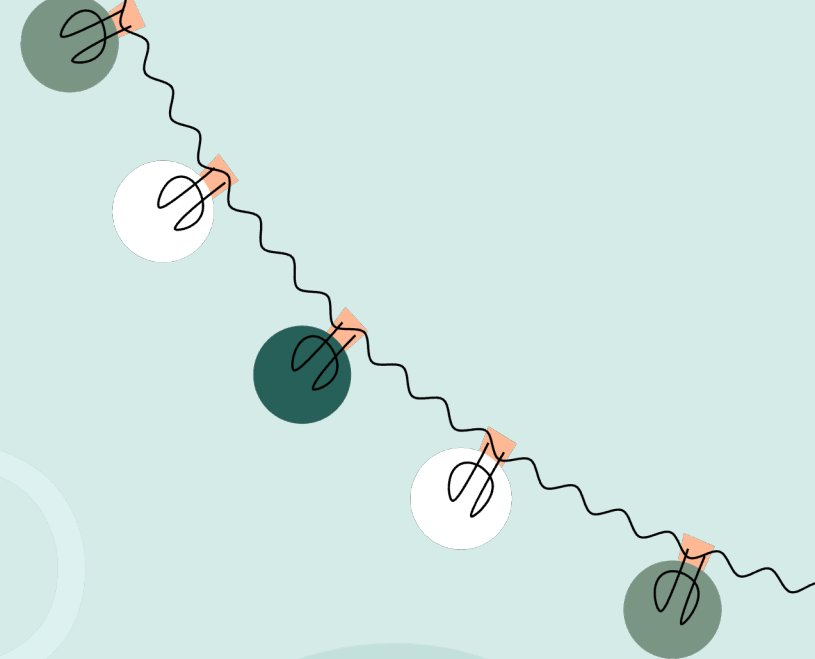
Holidays

Lesson 2 - Part 2





warm-



THE FUNNY CRAB



START



1st

What date is it?



first

Check

2nd

What date is it?



second

Check

3rd

What date is it?



third

Check



4th

What date is it?



fouth

Check

5th

What date is it?



fifth

Check

20th

What date is it?



twentieth

Check



25th

What date is it?



twenty-fifth

Check



30th

What date is it?



thirtieth

Check



31st

What date is it?



thirty-first

Check

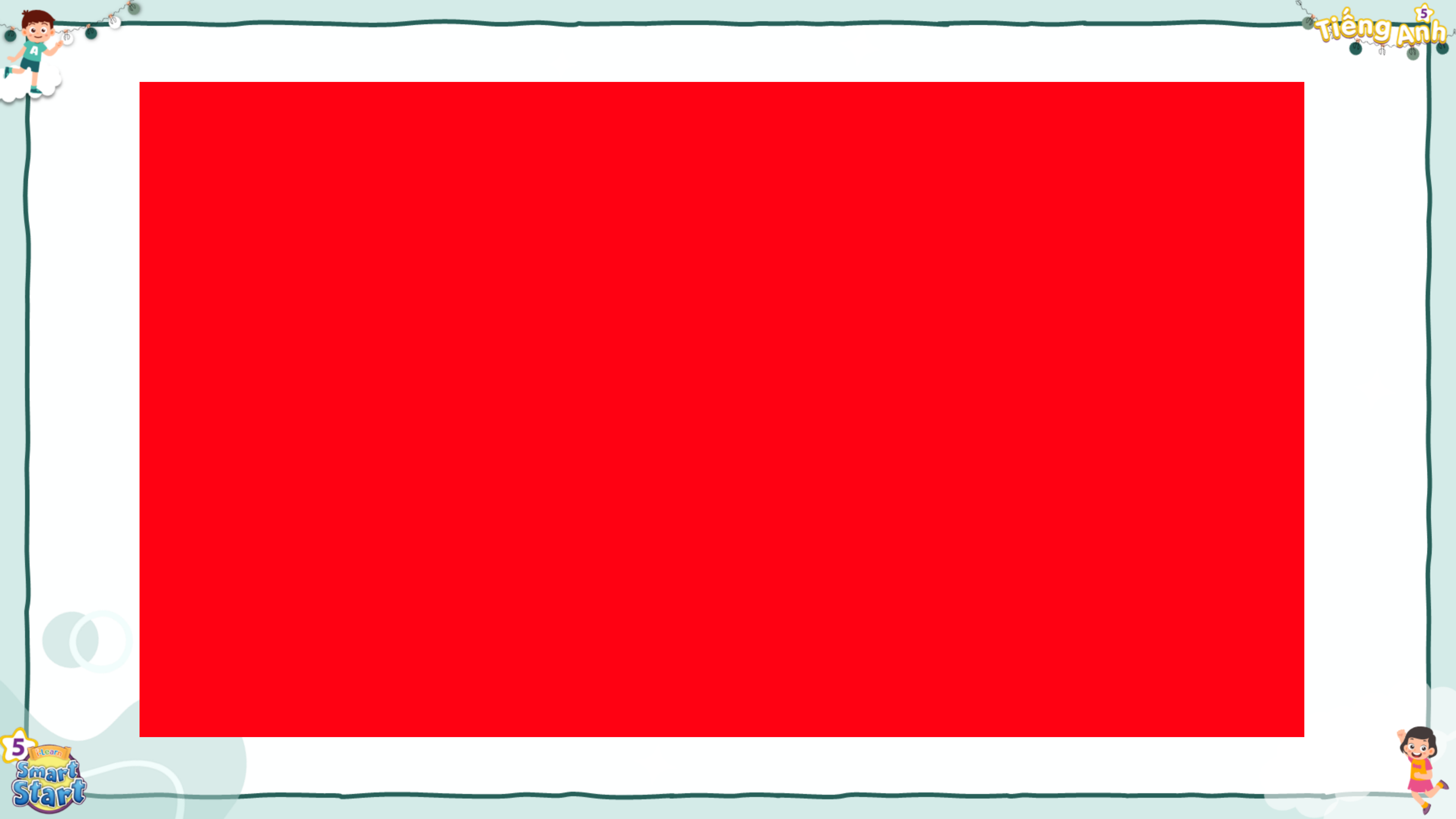
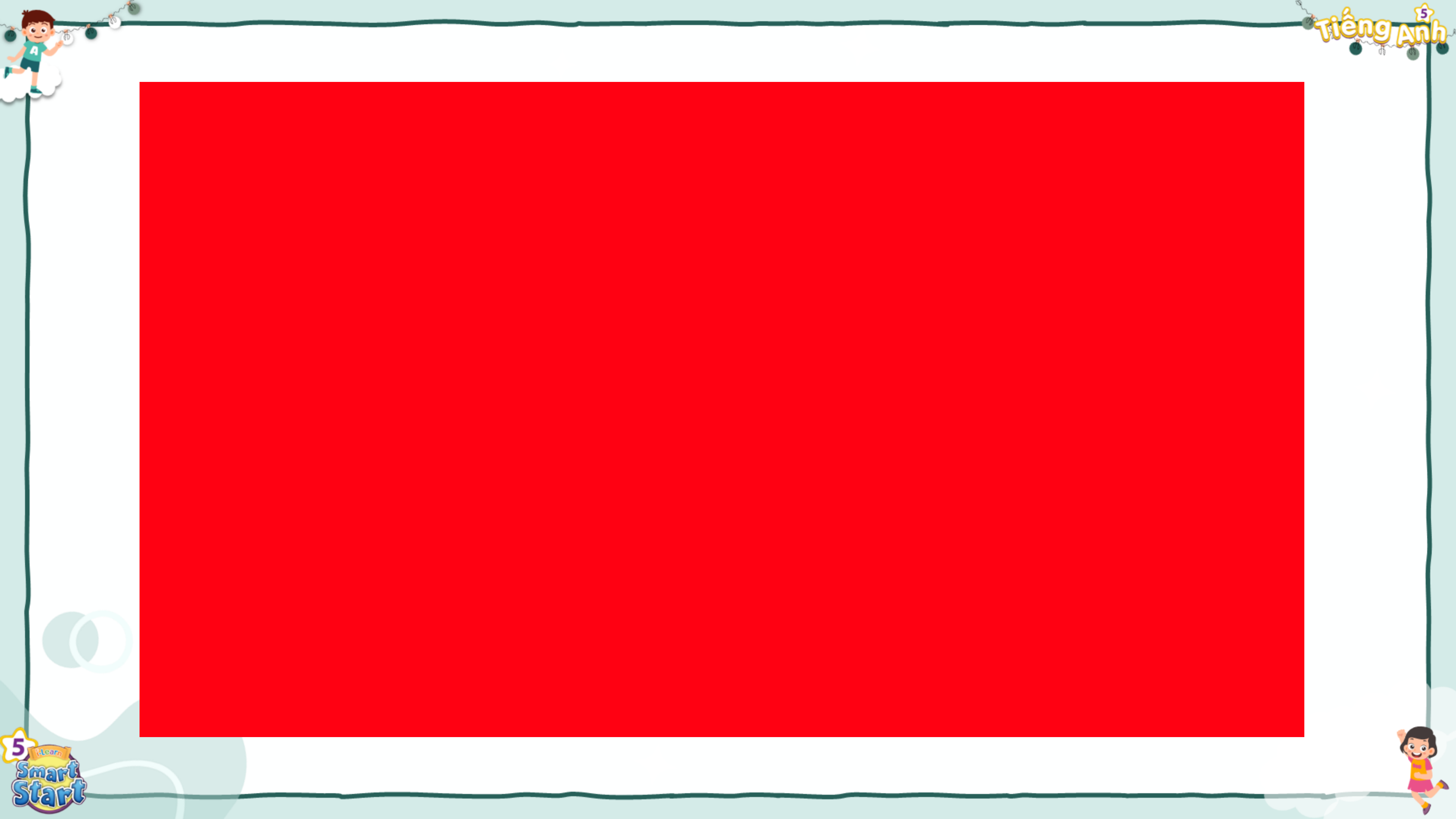


Goodjob!



Exit





Review



Children's Day



Christmas



Teachers' Day

When's _____ ?
- It's on _____ .



Lunar New Year (Tết)



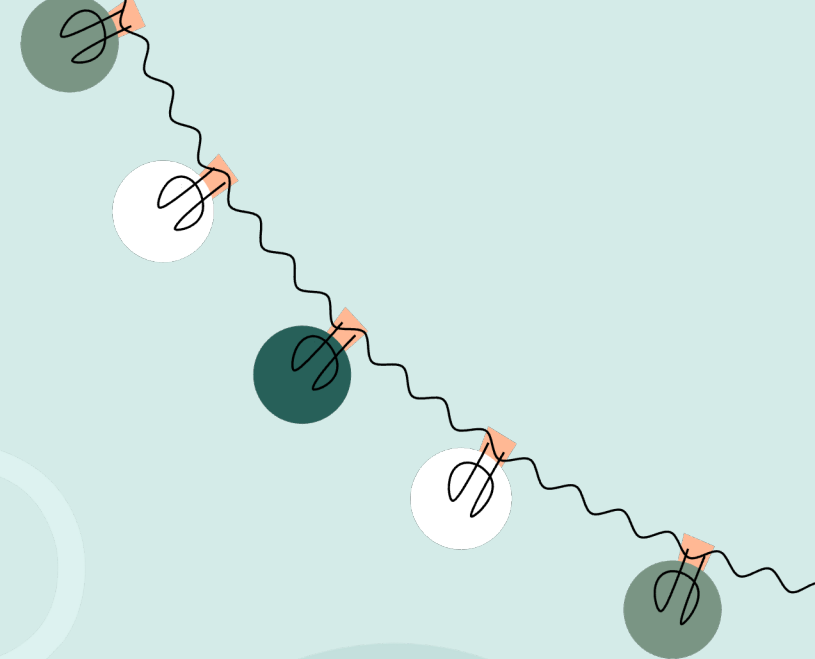
New Year's Eve



Halloween



Word tress





1. Listen and repeat. 
'twenty-fifth, 'thirty-first



'twenty-fifth

'thirty-first





2. Chant. Turn to page 123.

When's Lunar New Year?

It's on February twenty-second.

When's Christmas Day?

It's on December twenty-fifth.

When's New Year's Eve?

It's on December thirty-first.

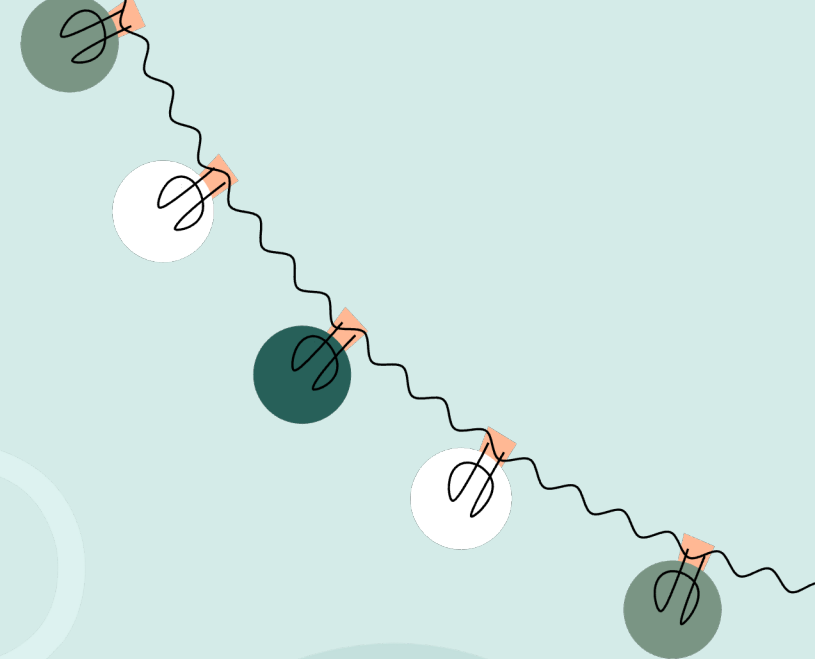
When's Teachers' Day?

It's on November twentieth.





Listening



Who can you see? - Alfie, Tom, Lucy, Ben.





Where are they?

- They're outside.



What are they talking about?

They're talking about holidays.





D 1. Describe the comic. Use the new words. Listen.





2. Listen and number.



thirtieth

1

twenty-fifth

twenty-third

nineteenth



Alfie: Wow! A Halloween party.
When is it?

1 **Ben:** It says it's on October (1).

Tom: That's this Saturday! Yay!

Alfie: Cool! I can wear some funny clothes.

Alfie: Hmm. What about the other special dates? Lucy, you love the school's Spring Festival, right? When is it?

2 **Lucy:** Yes, I do. It's on April (2).

Alfie: Great, thank you.

Alfie: Tom, when's the Teachers' Day party?

3 **Tom:** It's on November (3).

Alfie: Oh, great.

Alfie: Oh, and when's the Christmas party, Tom?

Tom: It's on December (4).

Alfie: Thanks, Tom. I love Christmas.

4 ...

Alfie: Ho ho ho...

Lucy: Alfie, it's Halloween, not Christmas...

Tom & Lucy: Haha!





2. Listen and number.



thirtieth

1

twenty-fifth

twenty-third

nineteenth



1

Alfie: Wow! A Halloween party.
When is it?

Ben: It says it's on October (1).

Tom: That's this Saturday! Yay!

Alfie: Cool! I can wear some funny clothes.





2. Listen and number.



thirtieth

1

twenty-fifth

2

twenty-third

nineteenth



2

Alfie: Hmm. What about the other special dates? Lucy, you love the school's Spring Festival, right? When is it?

Lucy: Yes, I do. It's on April (2).

Alfie: Great, thank you.





2. Listen and number.



thirtieth

1

twenty-fifth

2

twenty-third

nineteenth

3



3

Alfie: Tom, when's the Teachers' Day party?

Tom: It's on November (3).

Alfie: Oh, great.





2. Listen and number.



thirtieth

1

twenty-fifth

2

twenty-third

4

nineteenth

3



4

Alfie: Oh, and when's the Christmas party, Tom?

Tom: It's on December (4).

Alfie: Thanks, Tom. I love Christmas.

...

Alfie: Ho ho ho...

Lucy: Alfie, it's Halloween, not Christmas...

Tom & Lucy: Haha!



❖ Read again.

1

Alfie: Wow! A Halloween party.
When is it?

Ben: It says it's on October **thirtieth**.

Tom: That's this Saturday! Yay!

Alfie: Cool! I can wear some funny clothes.

3

Alfie: Tom, when's the Teachers' Day party?

Tom: It's on November **nineteenth**.

Alfie: Oh, great.

2

Alfie: Hmm. What about the other special dates? Lucy, you love the school's Spring Festival, right? When is it?

Lucy: Yes, I do. It's on April **twenty-fifth**.

Alfie: Great, thank you.

4

Alfie: Oh, and when's the Christmas party, Tom?

Tom: It's on December **twenty-third**.

Alfie: Thanks, Tom. I love Christmas.

...

Alfie: Ho ho ho...

Lucy: Alfie, it's Halloween, not Christmas...

Tom & Lucy: Haha!





Flying a plane



Play



Remember and fill in the blank.



**When is the Halloween party?
It's on October _____.**

thirtieth

Check

Next



Remember and fill in the blank.



**At Halloween party,
Alfie can wear some _____.**

funny clothes

Check

Next



Remember and fill in the blank.



When is the school's Spring Festival?

It's on April _____.

twenty-fifth.

Check

Next



Remember and fill in the blank.



**When is the Teachers' Day party?
- It's on November _____.**

nineteenth

Check

Next



Remember and fill in the blank.



When is the Christmas party?
- It's on December _____.

twenty-third.

Check

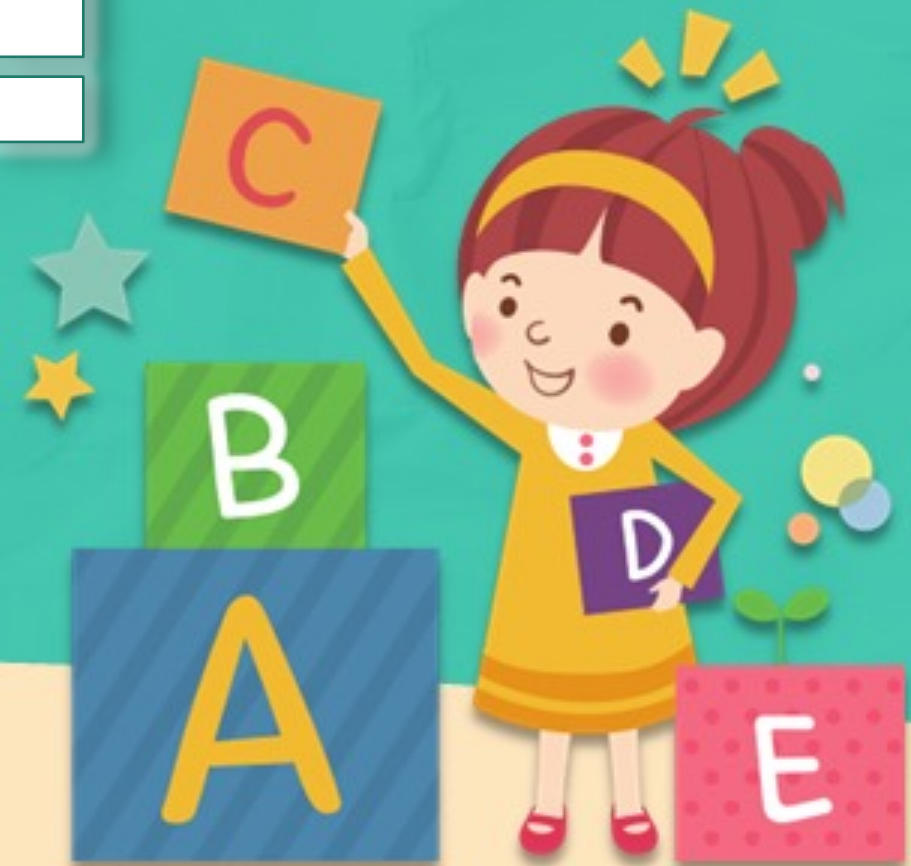
Next



Good job!



Exit



3. Role-play.



1

Alfie: Wow! A Halloween party.
When is it?

Ben: It says it's on October (1).

Tom: That's this Saturday! Yay!

Alfie: Cool! I can wear some funny clothes.

3

Alfie: Tom, when's the Teachers' Day party?

Tom: It's on November **nineteenth**.

Alfie: Oh, great.

2

Alfie: Hmm. What about the other special dates? Lucy, you love the school's Spring Festival, right? When is it?

Lucy: Yes, I do. It's on April **twenty-fifth**.

Alfie: Great, thank you.

4

Alfie: Oh, and when's the Christmas party, Tom?

Tom: It's on December **twenty-third**.

Alfie: Thanks, Tom. I love Christmas.

...

Alfie: Ho ho ho...

Lucy: Alfie, it's Halloween, not Christmas...

Tom & Lucy: Haha!





Workbook





Listen and circle.



1

A: When's **Halloween**/Christmas Day?

B: It's on **December 25th**/**October 31st**.

2

A: When's **Lunar New Year**,**New Year's Eve**?

B: It's on **January 22nd**/**December 31st**.

3

A: When's **Children's Day**/Teachers' Day?

B: It's on **November 20th**/**June 1st**.

4

A: When's **Christmas Day**,**Lunar New Year**?

B: It's on **December 25th**/**January 22nd**.



Extra Practice
WB, page 15



Look and write.

1



A: When's New Year's Eve?

B: It's on _____ December 31st _____.

2



A: When's Halloween?

B: It's on _____.

3



A: When's _____?

B: It's on _____.

4



A: When's _____?

B: _____.

5



A: _____?

B: _____.



D Look and write.

2



A: When's Halloween?

B: It's on October 31st.

3



A: When's Children's Day?

B: It's on June 1st.





D Look and write.

4



A: When's Christmas Day?

B: It's on December 25th.

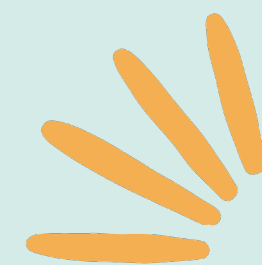
5



A: When's Lunar New Year?

B: It's on January 22nd.





THANK YOU



For joining!