

Unit 2

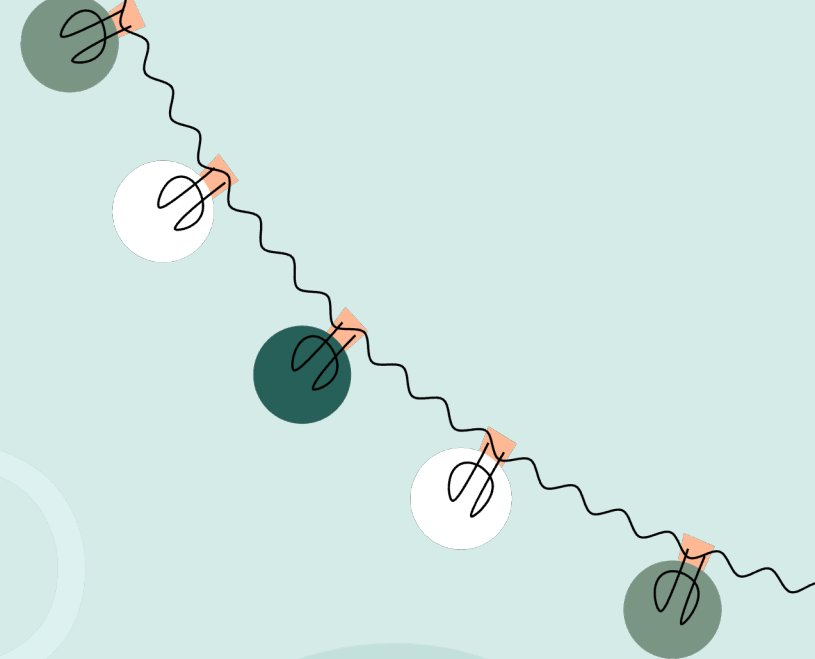
Holidays

Lesson 1 - Part 3



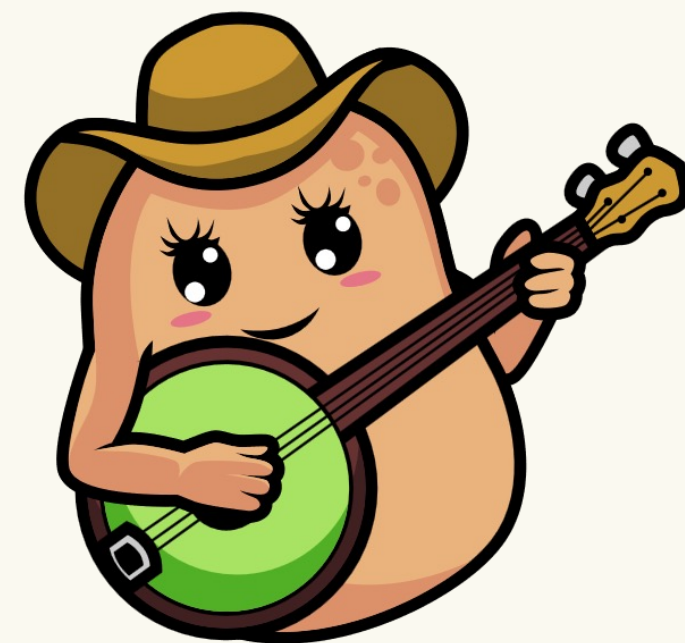
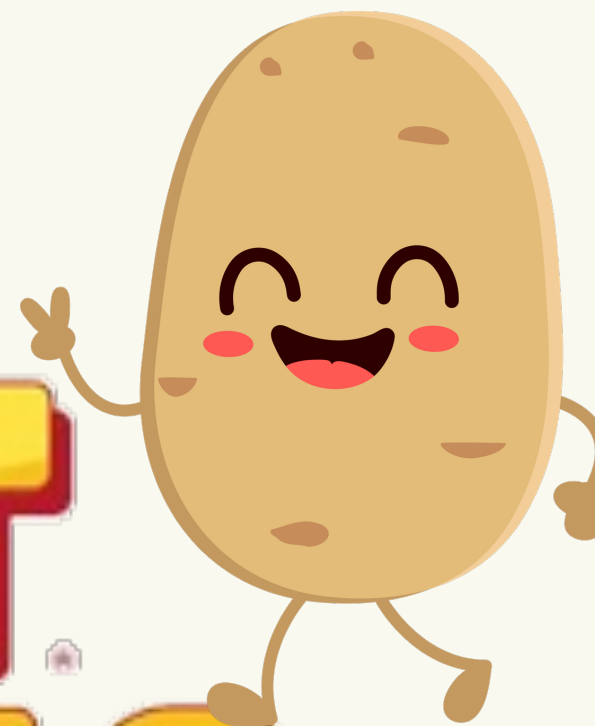


warm-








HOT POTATO



How to play

-  Simply play the music in class.
-  While the music is playing, students should pass the ball around the class.
-  When the music stops, the student with the ball must answer the question from the teacher.

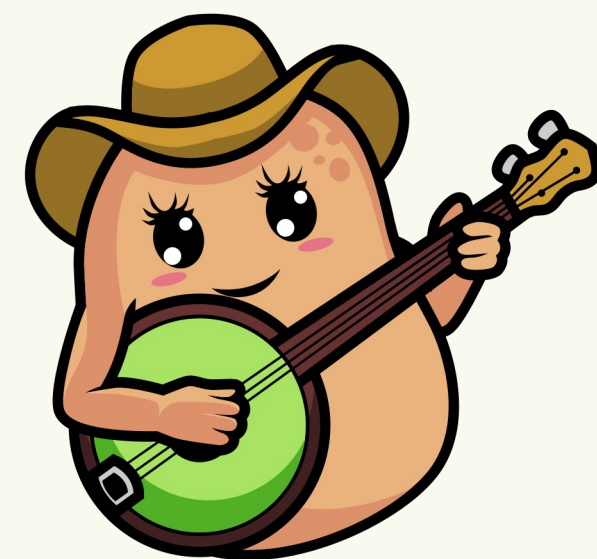
START



**HOT
POTATO**



STOP!



Answer the question

Christmas is on
December thirty-first .

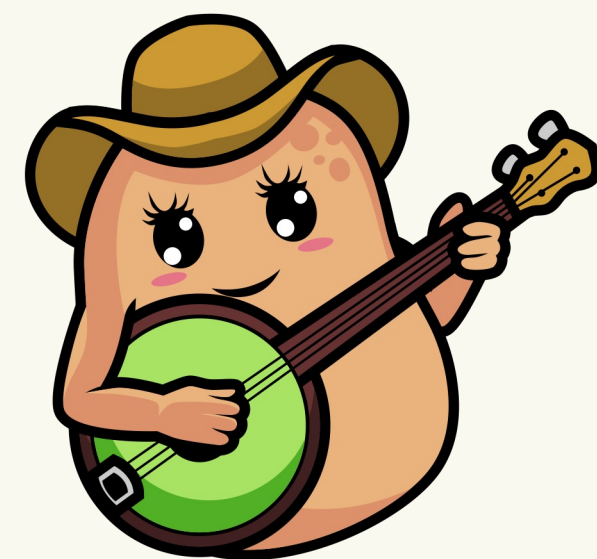
NEXT



**HOT
POTATO**



STOP!



Answer the question

The school's Spring Festival is on

April twenty-fifth.

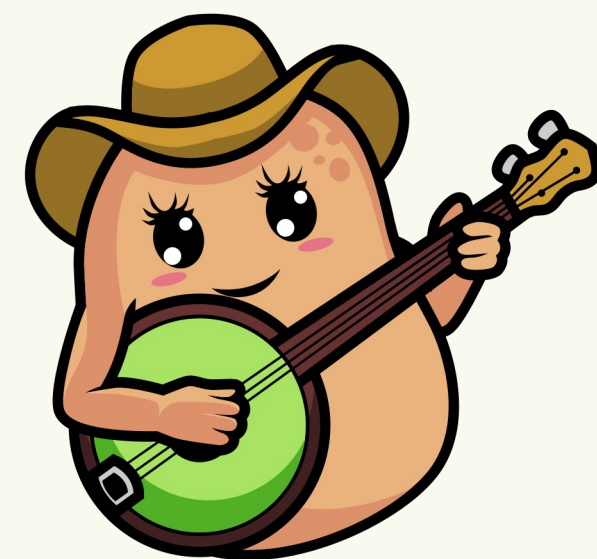
NEXT



**HOT
POTATO**



STOP!



Answer the question

Teachers' Day is on

November twentieth .

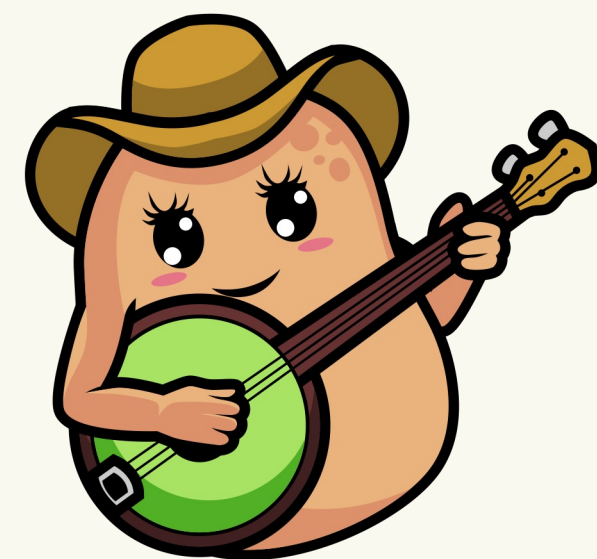
NEXT



**HOT
POTATO**



STOP!



Answer the question

Halloween is on

October thirty-first .

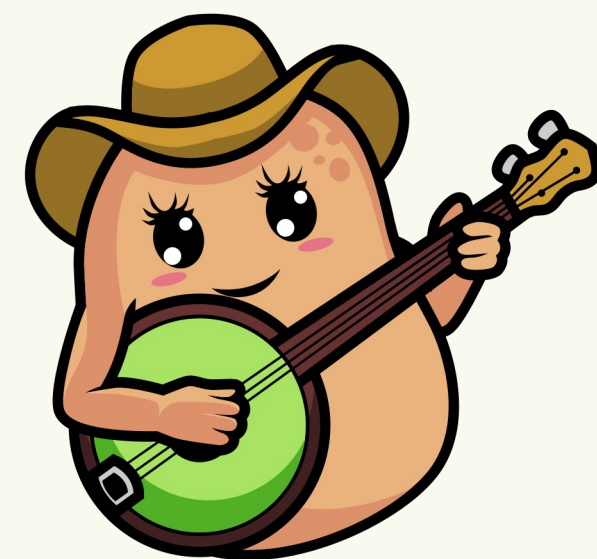
NEXT



**HOT
POTATO**



STOP!



Answer the question

New Year's Eve is on

December thirty-first .

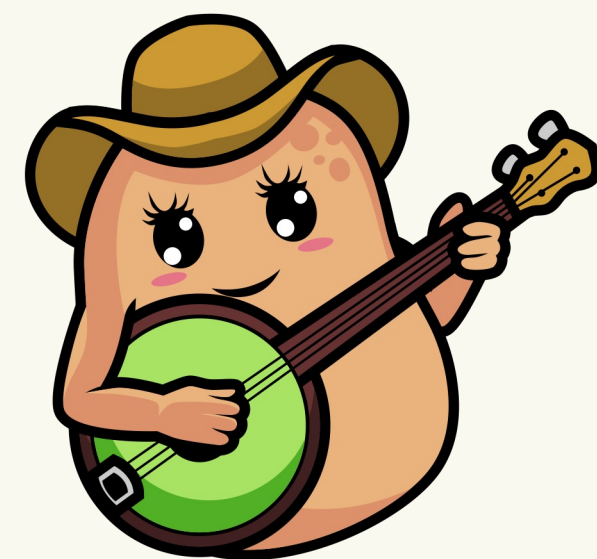
NEXT



**HOT
POTATO**



STOP!



Answer the question

Children's Day is on
June first

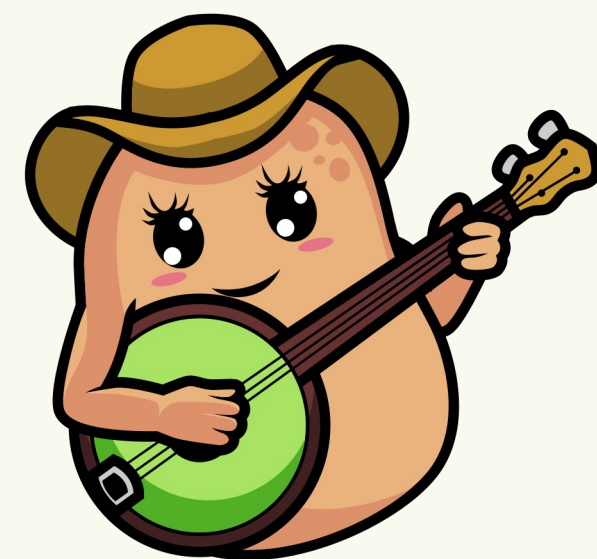
NEXT



**HOT
POTATO**



STOP!



Answer the question

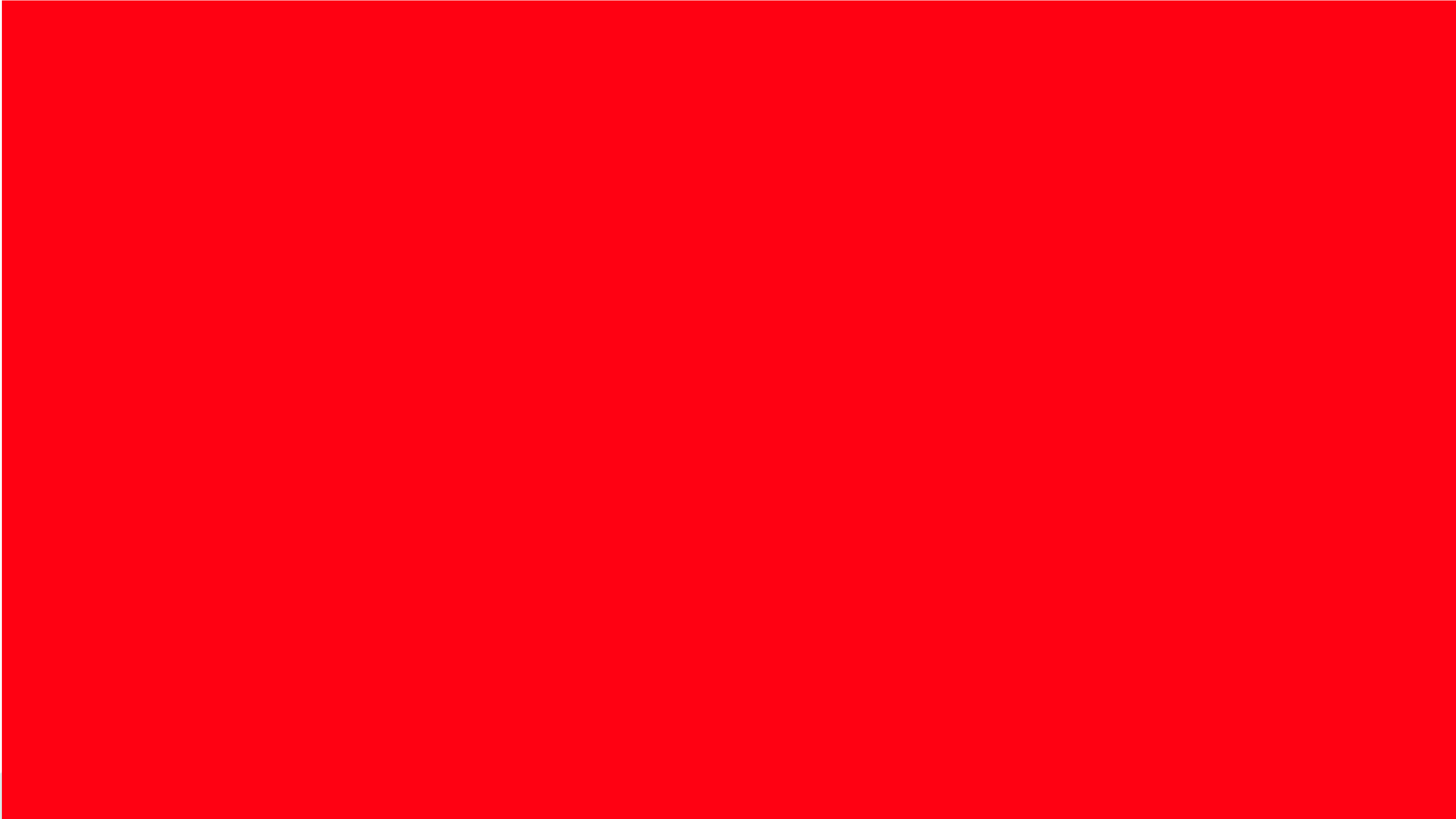
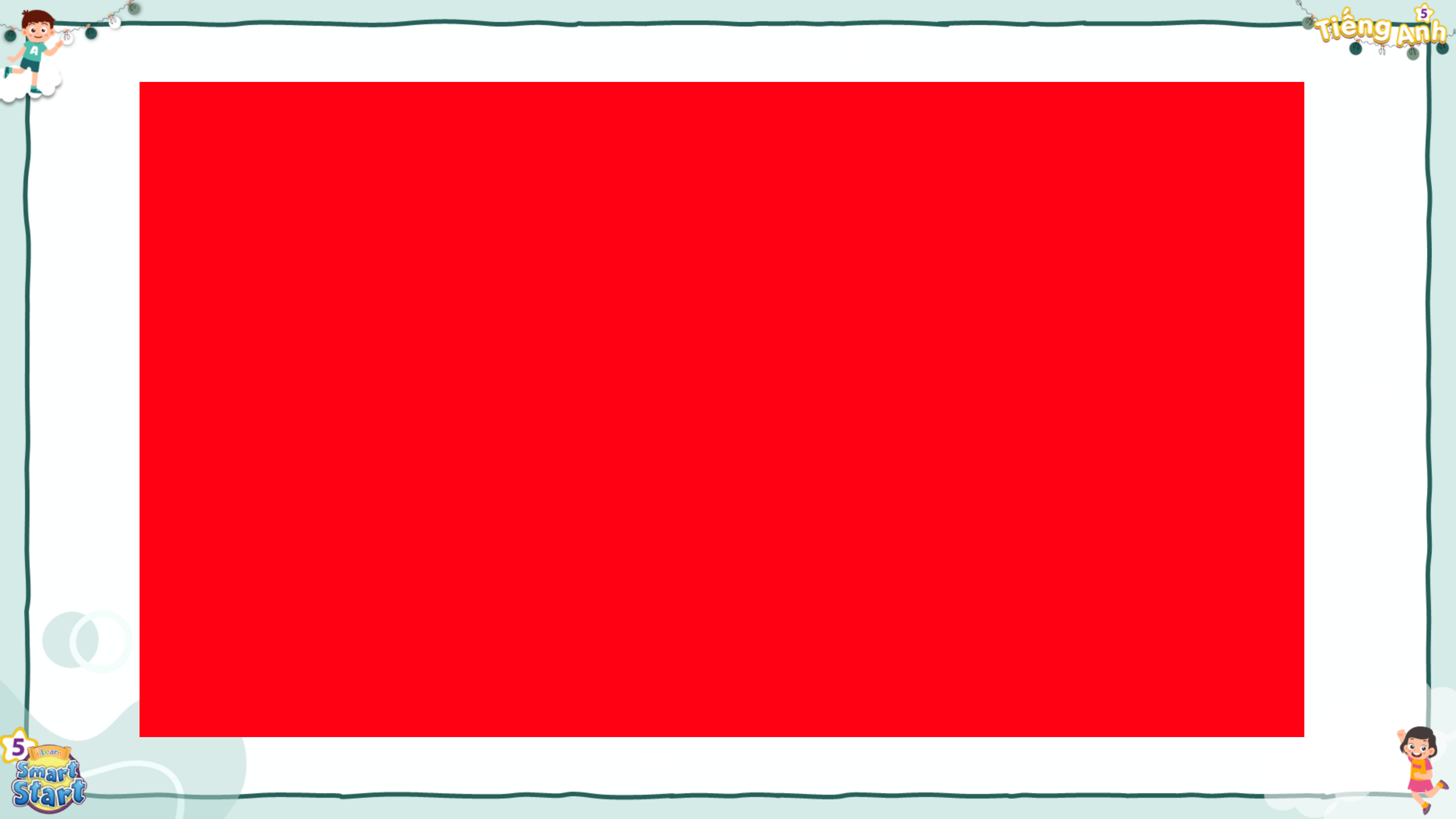
Lunar New Year (Tết) is on
January twenty-second .

NEXT

Congratulation



NEXT



Review



Children's Day



Christmas



Teachers' Day

When's _____ ?
- It's on _____ .



Lunar New Year (Tết)



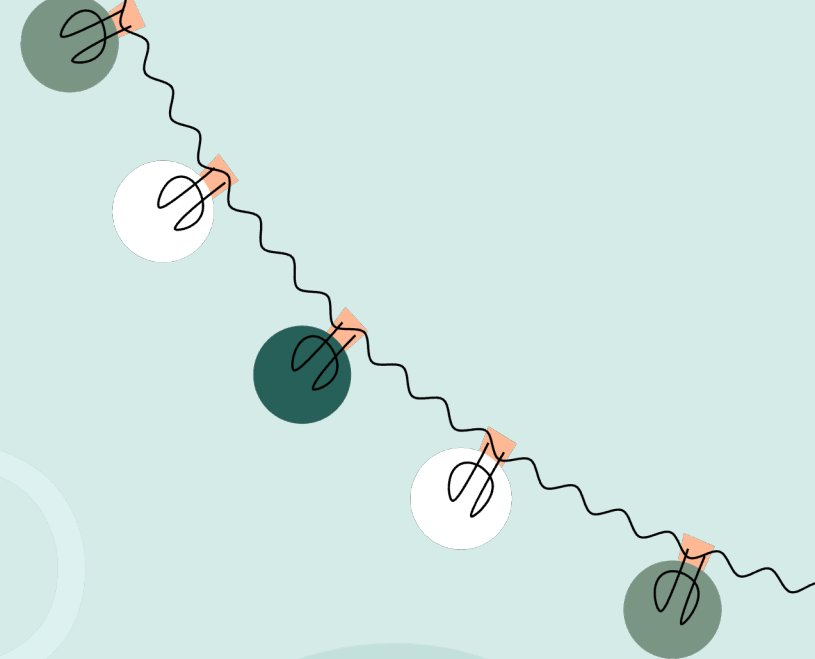
New Year's Eve



Halloween



Speaking





E

1. Point, ask, and answer.

When's Christmas Day?

It's on December twenty-fifth.



December 25th



October 31st



November 20th



June 1st



December 31st



January 22nd





E

1. Point, ask, and answer.

When's Christmas Day?

It's on December
twenty-fifth.

1



December 25th





E

1. Point, ask, and answer.

When's Halloween Day?

It's on October
thirty-first.

2



October 31st





E

1. Point, ask, and answer.

When's Teachers' Day?

It's on November twentieth.

3



November 20th





E

1. Point, ask, and answer.

When's Children's Day?

It's on June first.

4



June 1st





E

1. Point, ask, and answer.

When's New Year's Eve?

It's on December
thirty-first.

5



December 31st





E

1. Point, ask, and answer.

When's Lunar New Year?

It's on January
twenty-second.

6



January 22nd



2. List other special dates you know. Practice again.



When's _____?

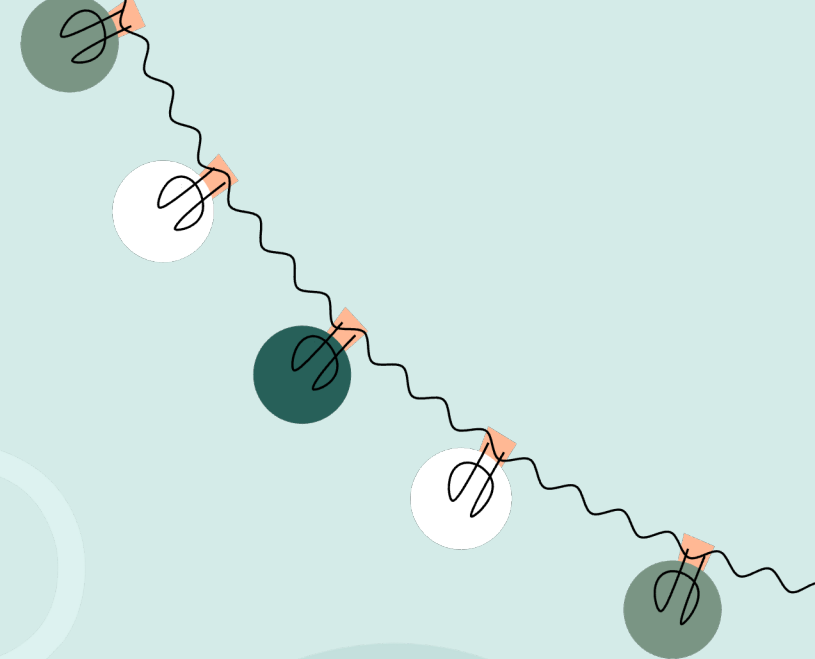


It's on _____.





Let's play!





F

Ask and answer questions about when holidays are.



When's Halloween?

It's on October thirty-first.



OK. Your turn!





Fun-corner



The bee & the bear



Play



Question

Make the question:

It's on January twenty-second.



When's Lunar New Year?



Answer

Next

Question

Make the question:

It's on June first.



When's Children's Day?



Answer

Next

Question

Make the question:

It's on October thirty-first.



When's Halloween Day?



Answer

Next

Question

Make the question:

It's on November twentieth.



When's Teachers' Day?



Answer

Next

Question

Make the question:

It's on December twentieth-fifth.



When's Christmas Day?



Answer

Next

Question

Make the question:

It's on December thirty-first.



When's New Year's Eve?



Answer

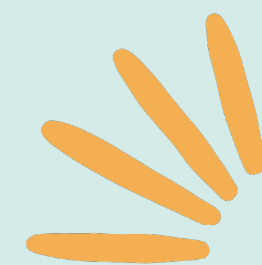
Next

Well done!



Next





THANK YOU



For joining!