



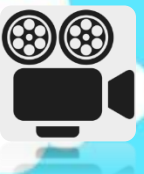
UNIT 16. WHERE'S THE POST OFFICE?

LESSON 1

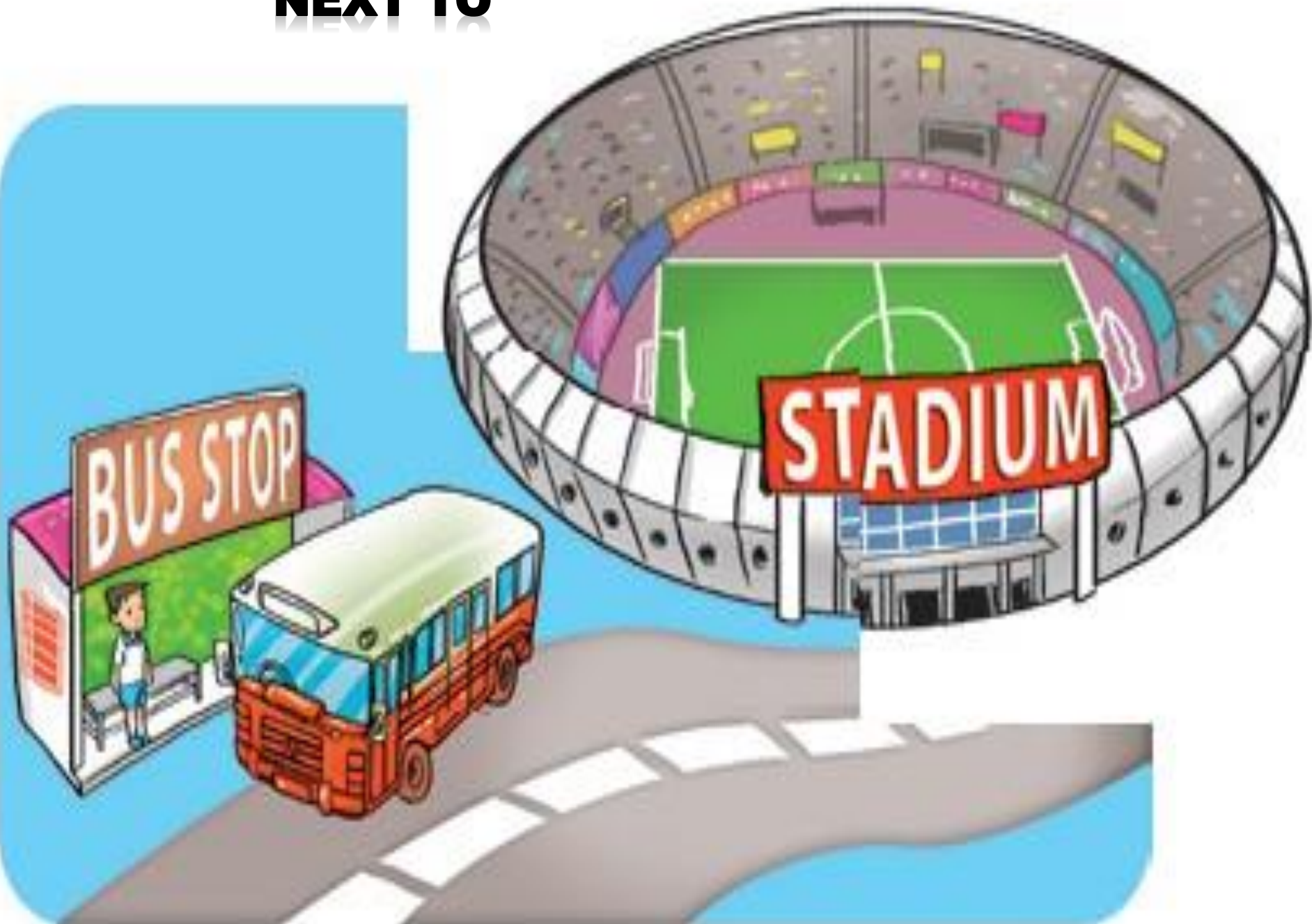




Town



NEXT TO





OPPOSITE



THEATRE / BETWEEN

MUSEUM



ON THE CORNER OF STREET

1 Look, listen and repeat.



Excuse me, where's the park, please?

Go straight ahead. It's at the end of the street.



a



Thank you.



Excuse me, where's the toilet, please?



It's over there, near the lake.



Thanks a lot.



You're welcome.



Excuse me, is the museum near here?



No, it isn't. Turn left. It's on the corner of the street, next to the theatre.

Thank you.



c

Excuse me, where's the post office?



Turn right. It's between the supermarket and the cinema.

Thanks a lot.



d



You're welcome.

2 Point and say.  



bus stop/
next to/
stadium



pharmacy/
opposite/
market



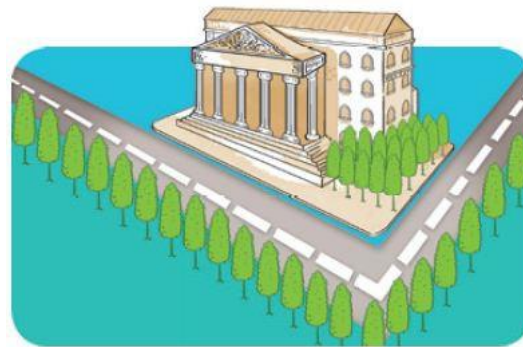
theatre/
between/
cinema/supermarket



museum/
on the corner
of the street

1. Vocabulary

- bus stop
- stadium
- market
- theatre
- museum
- opposite
- the corner



2. Model sentence

Where's the bus stop?

It's **next to stadium.**



Where's **the bus stop** ?



It's **next to the stadium**.

Where's **the pharmacy** ?



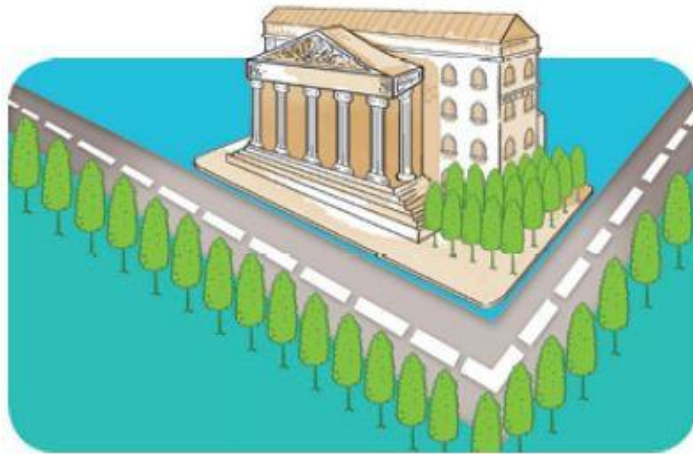
It's **opposite the market.**

Where's **the theatre** ?



It's **between the supermarket and the
cinema.**

Where's **the museum** ?



It's **on the corner of street.**

LISTEN AND TICK



Opposite the
pharmacy



Between the
supermarket
and the cinema



Next to the
stadium



Go along the
street and
turn left



LOOK, READ AND COMPLETE

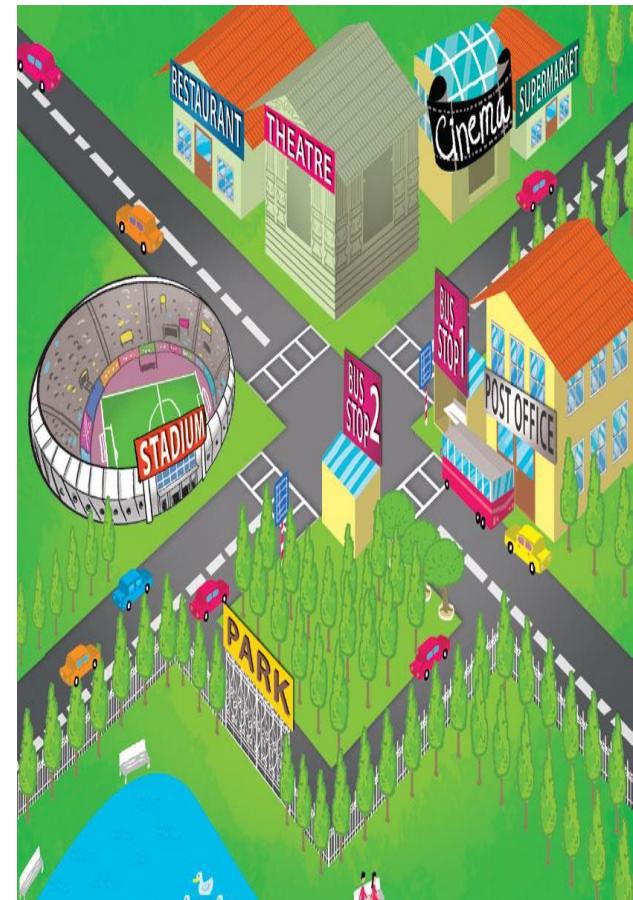
between

On the coner

opposite

Next to

1. The theatre is **opposite** the stadium.
2. The cinema is **between** the theatre and the supermarket.
3. The stadium is **on the coner** of the street.
4. Bus stop 1 is **opposite** Bus stop 2.
5. The post office is **next to** Bus stop



LET'S SING



WHERE'S THE BUS STOP?

Excuse me, where's the bus stop?

Where's the bus stop?

Go straight ahead.

It's on the corner,

At the end of the street.



Excuse me, where's the park?

Where's the park?

Go straight ahead.

Then turn left.

It's opposite the museum.



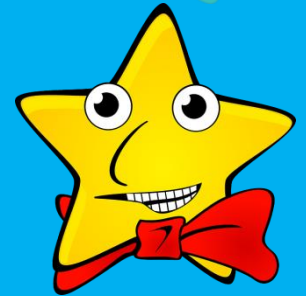
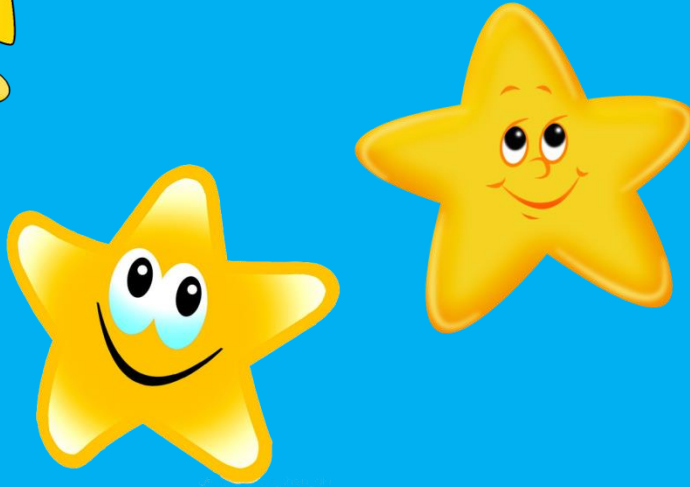
IT'S TIME

TO PLAY



Lucky STARS





LUCKY STARS





Lucky STARS

+5



5

UNLUCKY

QUESTION 01



Where's the ... ?



A

school

B

bus stop

C

museum

D

supermarket



Where's the ... ?



A

market

B

pharmacy

C

supermarket

D

museum



Where's the ... ?



A

stadium

B

Bus stop

C

school

D

museum

QUESTION 04



Where's the ... ?



A

Post office

B

Bus stop

C

Market

D

Supermarket



QUESTION 05



Where's the ... ?



A

museum

B

school

C

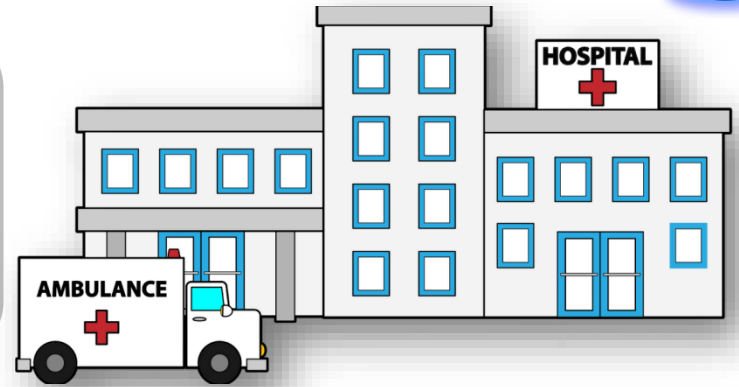
theatre

D

cinema



Where's the ... ?



A

museum

B

cimema

C

Hospital

D

theatre

QUESTION 07



Where's the ... ?



A

Post office

B

bank

C

museum

D

restaurant



QUESTION 08



Where's the ... ?



A

stadium

B

cinema

C

restaurant

D

theatre

